

Frame bench

by Ramón Esteve

Frame, outdoor collection by Ramon Esteve, comes from generating serene and timeless shapes using the framework as elementary geometry. The endless possibilities offered by the material using advanced technology, was the motivation to explore the limits.

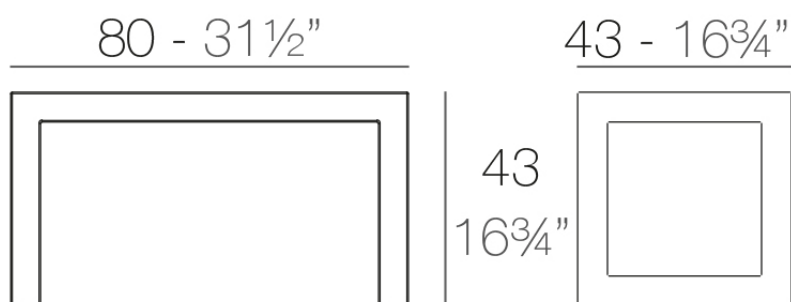


Info

Description

Made of polyethylene resin by rotational moulding. 100% Recyclable. Item suitable for indoor and outdoor use. Available in different finishes.

Weight: 7 Kg



FRAME Banco
FRAME Bench

Accessories

- **Fabric**

Fabric

Finishes

finishes

BASIC

Ref. 54087



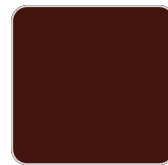
orange



notte blue



crema



purjai red



white



black



steel



red



khaki



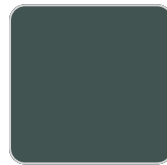
taupe



ecru



beige



green

Matt Polyethylene

LACQUERED

Ref. 54087F



orange



notte blue



crema



modo green



purjai red

VONDOM



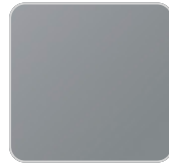
white



black



bronze



steel



anthracite



champany



red



khaki



taupe



ecru



beige

Lacquered Polyethylene

