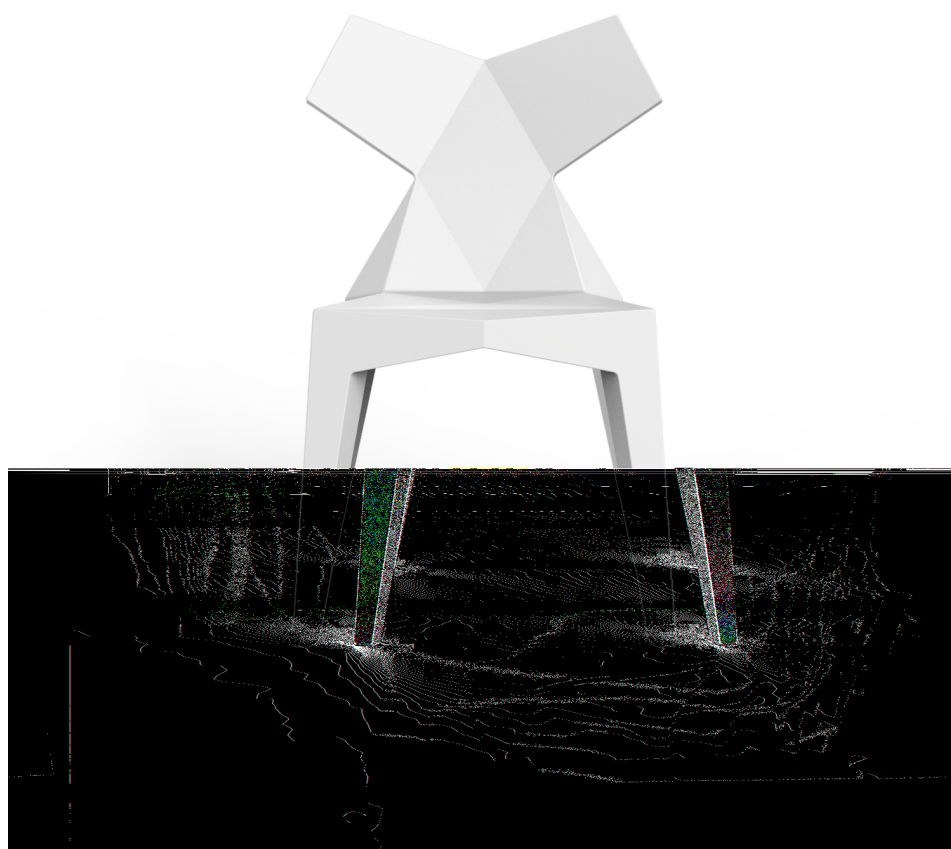


Kimono chair

by Ramón Esteve

Vondom pays tribute to the culture of the Orient in the latest creation from Ramón Esteve: a designer chair inspired by the forms of the kimono. The proposal is a design which was futuristic as well as traditional, the reason for the reference to the Japanese garment, the fabrics of which are imbued with symbolism and history.

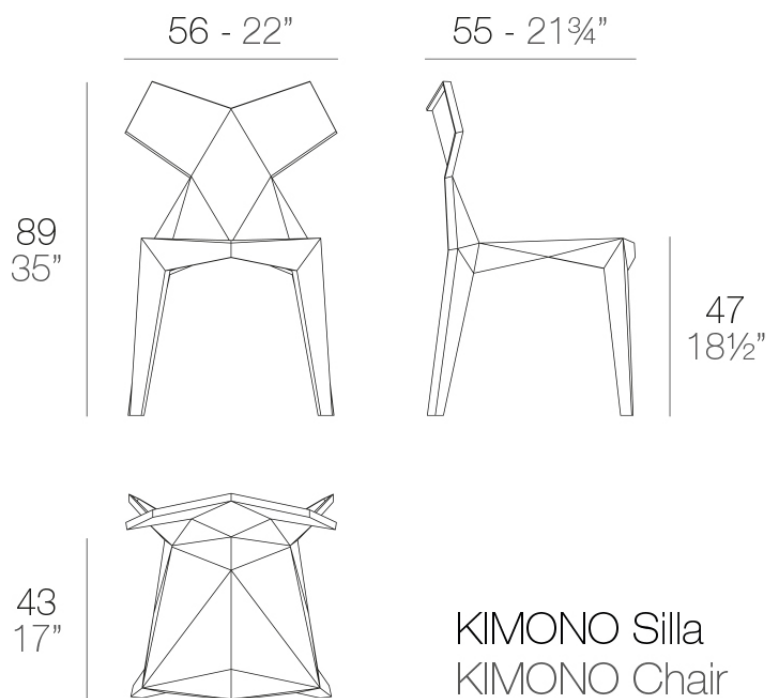


Info

Description

Made from polypropylene and reinforced with fiberglass manufactured by gas injection. Stackable. Available in various colors. Suitable for indoor and outdoor use.

Weight: 5.1 Kg



Finishes

finishes

BASIC PP
Ref. 54299



ecru



black



white



crema



tortora

Available in various colors

Ambients

