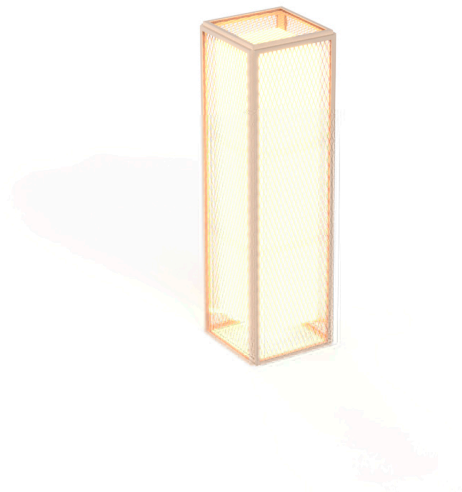


Products / Lamps / The Factory Lamp M

The factory lamp m

by Ramón Esteve

The Factory Collection, designed by Ramon Esteve for Vondom, is **characterized by the aluminum profile and the “deployé” mesh**. Discover this collection of aluminium furniture composed of a modular sofa, an armchair, a lounger, a side table, a lamp, a coffee table, a high table, chairs, and a room divider.

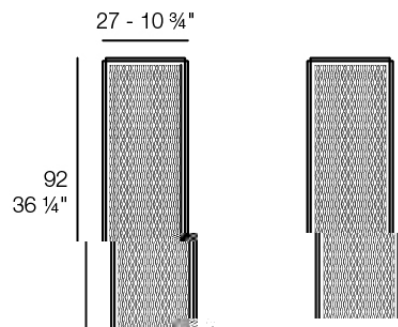


Info

Description

Designer lamp. The deployed mesh is made from aluminum, and the inner lighting is made out of polyethylene resin manufactured by rotational molding. Suitable for an interior and an outdoor use. Available in various finishes.

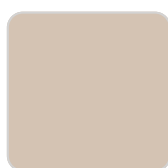
Weight: 7.29 Kg



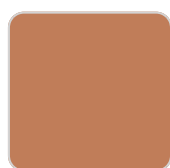
Finishes

lighting

WHITE LED
Ref. 54615W



crema



melon



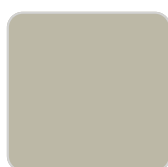
castoro fiber



red



bronze



ecru



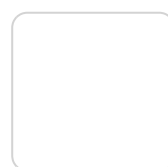
modo green



black



purjai red



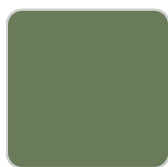
white



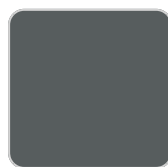
british gray



notte blue



pickle



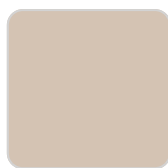
traffic gray



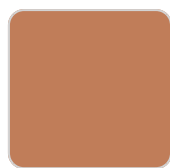
almond

White internally lit unit with LED technology. Available only in matte ice white finish.

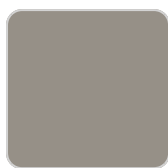
RGBW LED
Ref. 54615L



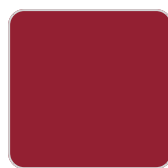
crema



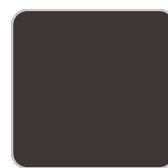
melon



castoro fiber



red



bronze



Unit with internal lighting with RGBW LED technology and remote control unit for switching colors. Available only in matte ice white finish. Remote control included.

RGBW LED DMX

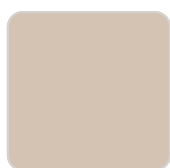
Ref. 54615D



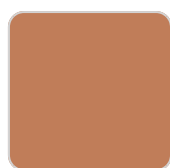
Unit with internal lighting with RGBW LED technology and remote control unit for switching colors. Also controlled by DMX-1024 (wireless), enabling communication between one or more products simultaneously via the DMX transmitter (not included). There are two options to choose from: Professional XLR DMX and Home WIFI DMX. (Remote control included). Optional battery

RGBW LED BATTERY

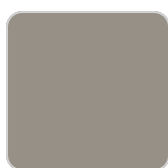
Ref. 54615Y



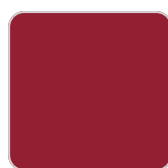
crema



melon



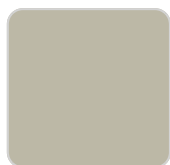
castoro fiber



red



bronze



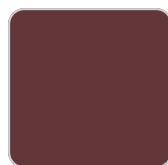
ecru



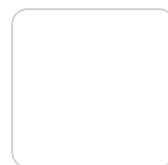
modo green



black



purjai red



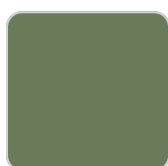
white



british gray



notte blue



pickle



traffic gray

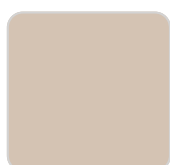


almond

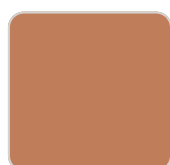
Unit with internal lighting with battery-powered RGBW LED technology. Includes charger and remote control for switching colors and charger. Available only in matte ice white finish.

RGBW LED DMX BATTERY

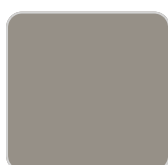
Ref. 54615DY



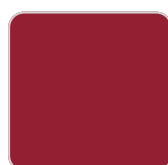
crema



melon



castoro fiber



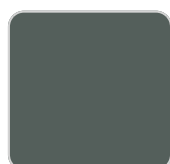
red



bronze



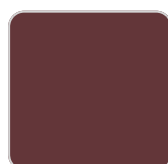
ecru



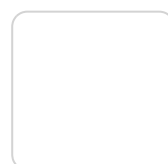
modo green



black



purjai red



white



british gray

notte blue

pickle

traffic gray

almond

Unit with internal lighting with RGBW LED technology and remote control unit for switching colors. Also controlled by DMX-1024 (wireless), enabling communication between one or more products simultaneously via the DMX transmitter (not included). There are two options to choose from: Professional XLR DMX and Home WIFI DMX. (Remote control included).

Ambients

