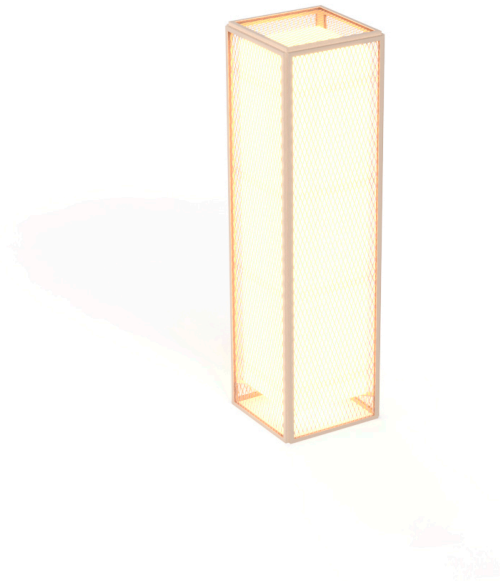


Products / Lamps / The Factory Lamp L

# The factory lamp I

by Ramón Esteve

The Factory Collection, designed by Ramon Esteve for Vondom, is **characterized by the aluminum profile and the “deployé” mesh**. Discover this collection of aluminium furniture composed of a modular sofa, an armchair, a lounger, a side table, a lamp, a coffee table, a high table, chairs, and a room divider.

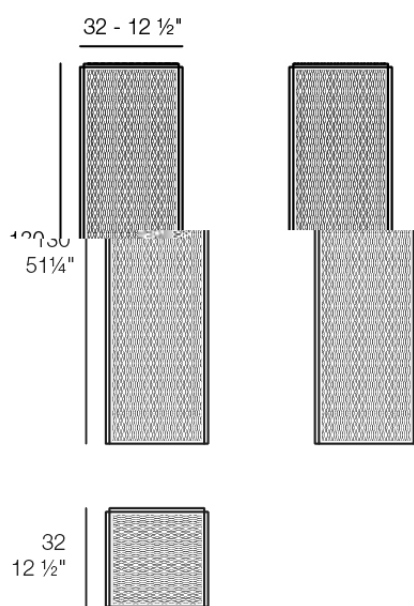


# Info

---

## Description

Weight: 11.69 Kg



THE FACTORY Lámpara 31x31x120  
THE FACTORY Puff S 12¼ x 12¼ x 51¼"

# Finishes

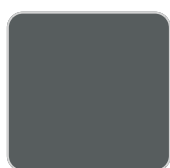
---

## finishes

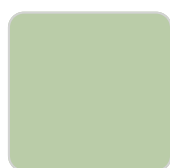
---

### ALUMINIUM

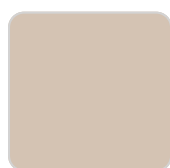
Ref. 54621



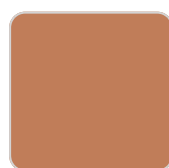
traffic gray



almond



crema



melon



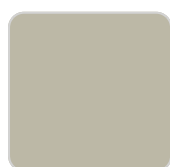
castoro fiber



red



bronze



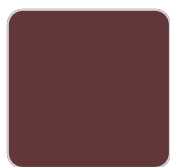
ecru



modo green



black



purjai red



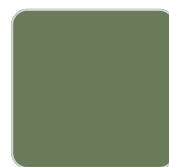
white



notte blue



british gray



pickle

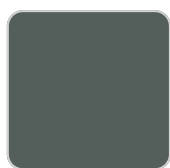
Lacquered aluminium profile.

## lighting

---

### WHITE LED

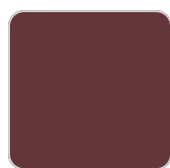
Ref. 54621W



modo green



white



purjai red



notte blue



british gray



White internally lit unit with LED technology. Available only in matte ice white finish.

### RGBW LED Ref. 54621L



Unit with internal lighting with RGBW LED technology and remote control unit for switching colors. Available only in matte ice white finish. Remote control included.

### RGBW LED DMX Ref. 54621D



Unit with internal lighting with RGBW LED technology and remote control unit for switching colors. Also controlled by DMX-1024 (wireless), enabling communication between one or more products simultaneously via the DMX transmitter (not included). There are two options to choose from: Professional XLR DMX and Home WIFI DMX. (Remote control included). Optional battery

## RGBW LED BATTERY

Ref. 54621Y



Unit with internal lighting with battery-powered RGBW LED technology. Includes charger and remote control for switching colors and charger. Available only in matte ice white finish.

## RGBW LED DMX BATTERY

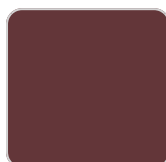
Ref. 54621DY



modo green



white



purjai red



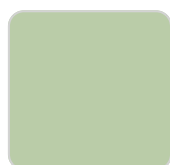
notte blue



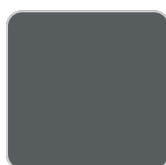
british gray



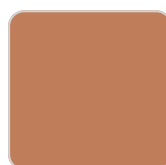
pickle



almond



traffic gray



melon



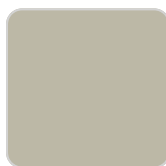
crema



red



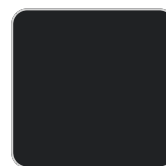
castoro fiber



ecru



bronze



black

Unit with internal lighting with RGBW LED technology and remote control unit for switching colors. Also controlled by DMX-1024 (wireless), enabling communication between one or more products simultaneously via the DMX transmitter (not included). There are two options to choose from: Professional XLR DMX and Home WIFI DMX. (Remote control included).

# Ambients

---

