

## Vela sofa 220cm

by Ramón Esteve

Vela Collection, designed by Ramon Esteve for Vondom. This extensive outdoor furniture and plantpot collection aims to offer the comfort and the quality of interior furniture without losing it's original qualities.



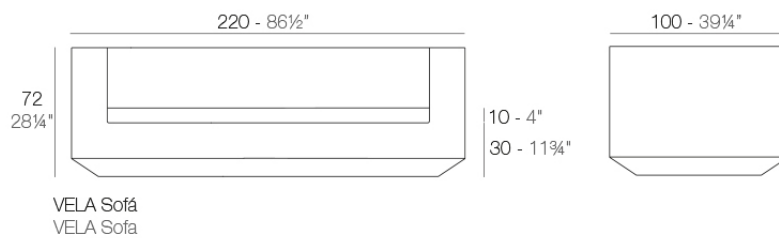
## Info

---

### Description

Made of polyethylene resin by rotational moulding. 100% Recyclable. Item suitable for indoor and outdoor use. Available in different finishes.

Weight: 62.13 Kg



## Finishes

---

### finishes

---

BASIC

Ref. 54170



orange



ice



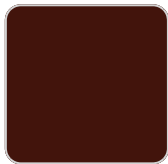
notte blue



crema



green



purjai red



white



black



bronze



steel



anthracite



red



khaki



taupe



ecru



# VONDOM

beige



Matt Polyethylene

LACQUERED

Ref. 54170F



orange



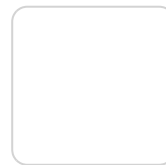
notte blue



crema



purjai red



white



black



bronze



steel



anthracite



red



khaki



taupe



ecru




beige



modo green



champany



Lacquered Polyethylene

## lighting

---

WHITE LED  
Ref. 54170W

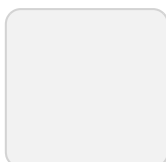


ice



White internally lit unit with LED technology. Available only in matte ice white finish.

RGBW LED  
Ref. 54170L



ice



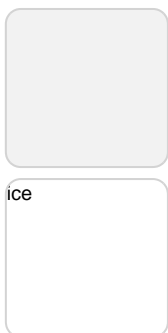
Unit with internal lighting with RGBW LED technology and remote control unit for switching colors. Available only in matte ice white finish. Remote control included.

## RGBW LED DMX Ref. 54170D



Unit with internal lighting with RGBW LED technology and remote control unit for switching colors. Also controlled by DMX-1024 (wireless), enabling communication between one or more products simultaneously via the DMX transmitter (not included). There are two options to choose from: Professional XLR DMX and Home WIFI DMX. (Remote control included).  
Optional battery

## RGBW LED BATTERY Ref. 54170Y



Unit with internal lighting with battery-powered RGBW LED technology. Includes charger and remote control for switching colors and charger. Available only in matte ice white finish.

## RGBW LED DMX BATTERY Ref. 54170DY



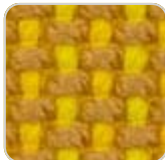
Unit with internal lighting with RGBW LED technology and remote control unit for switching colors. Also controlled by DMX-1024 (wireless), enabling communication between one or more products simultaneously via the DMX transmitter (not included). There are two options to choose from: Professional XLR DMX and Home WIFI DMX. (Remote control included).

## fabric

---

GLAD

Ref. 54170CO



oro 1031



ocre 1051



sunset 1020



delhi 1038



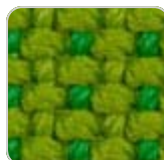
lima 1030



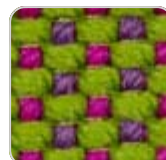
aguacate 1028



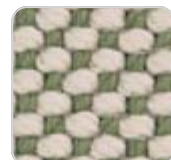
caribe 1004



bosc 1029



artemisa 1027



oasis 1007

# VONDOM



oceano 1005



pruna 1045



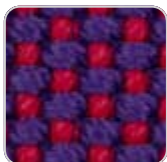
noa 1026



berry 1021



amatista 1011



vera 1019



afrodita 1013



grana 1046



bacco 1034



dahlia 1035



wine 1012



foc 1052



hestia 1014



turquoise 1053



niord 1015



masai 1018



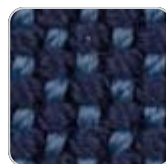
ultramar 1002



aquamarina 1003



esmeralda 1016



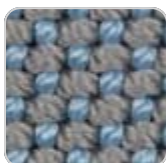
night 1024



galan 1025



eclipse 1023



perla 1006



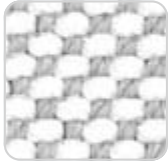
calipso 1017



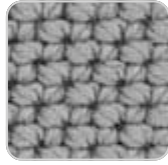
snow 1041



# VONDOM



iceberg 1037



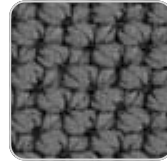
steel 1042



moon 1040



granito 1008



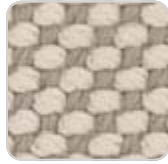
grey 1043



anthracite 1044



ecru 1047



dessert 1033



taupe 1048



terra 1039



duna 1009



moka 1010



chocolate 1050

Soft and cozy fabric suitable for indoor and outdoor use.

## VARM

Ref. 54170CO



black+crema  
1066



purjai+crema  
1065



green+crema  
1064



blue jeans 1071



crema+blue 1063

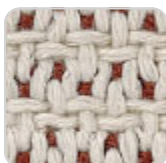
# VONDOM



crema+gray 1062



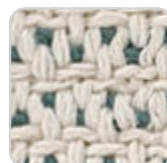
tortora+crema  
1070



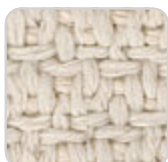
crema+ purjai red  
1061



purjai red 1069



crema+modo  
green 1060



crema 1068



blue+crema 1067

Soft and cozy fabric suitable for indoor and outdoor use.

## HYGGE

Ref. 54170CO



black 1082



gray 1081



crema 1080



blue 1083

Soft and cozy fabric suitable for indoor and outdoor use.

## NAUTIC

Ref. 54170CO

# VONDOM



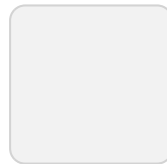
taupe 1102



bronze 1104



notte blue 1114



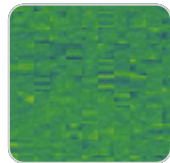
white 1100



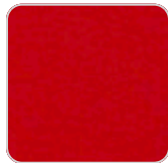
orange 1113



crema 1103



forest 1112



red 1108



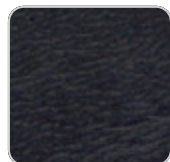
steel 1101



natural 1111



purjai red 1106



black 1105

Soft leather like fabric suitable for indoor and outdoor use. Standard option for upholstery.

## SILVERTEX Ref. 54170CO



natural 1220



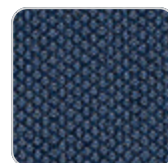
white 1219



forest 1224



purjai red 1223



notte blue 1222

# VONDOM



ecru 1221



beige 1211



bronze 1214



khaki 1218



steel 1208



taupe 1209



antrachite 1210

Vinyl fabric suitable for indoor and outdoor use. Special option for upholstery.

## CREVIN Ref. 54170CO



melon 1304



lemongrass 1303



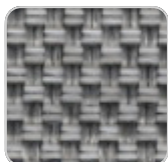
deep blue 1302



blue 1301



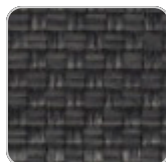
white 1308



steel 1309



taupe 1310



anthracite 1311

Upholstery fabric, that as and natural appearance and can be easy cleaned by

# VONDOM

washing machines, allowing an easy removal of mildew. Suitable for indoor and outdoor use

## CICO

Ref. 54170CO



cranberry 1707



blueberry 1706



onyx 1705



greywacke 1704



sandstone 1703



gravel 1702



limestone 1701

Cozy fabric with an elegant look and soft touch.

## ACAPULCO

Ref. 54170CO



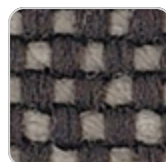
acapulco 1801



acapulco 1806



acapulco 1805



acapulco 1804



acapulco 1803

# VONDOM

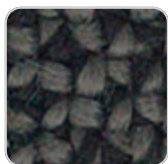


acapulco 1802

Cozy fabric with an elegant look and soft touch.

## SIESTA

Ref. 54170CO



siesta 1813



siesta 1812



siesta 1811



siesta 1810

Cozy fabric with an elegant look and soft touch.

## IKON

Ref. 54170CO



ikon 1835



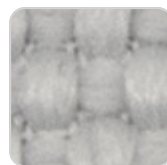
ikon 1834



ikon 1833



ikon 1832



ikon 1831

# VONDOM

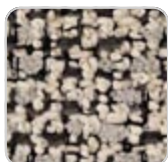


ikon 1830

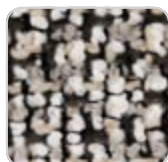
Cozy fabric with an elegant look and soft touch.

## KROLLET

Ref. 54170CO



krollet crema  
1922



krollet white 1921



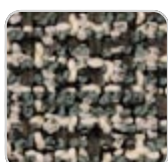
krollet black 1926



krollet blue notte  
1925



krollet purjai 1924



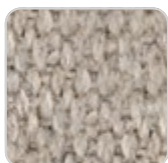
krollet verde 1923

Soft and cozy fabric suitable for indoor and outdoor use.

## HERITAGE

Ref. 54170CO

# VONDOM



papyrus 1530

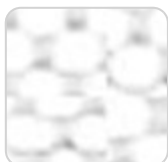


granite 1531

Outdoor fabrics are waterproof 50% recycled acrylic, 47% acrylic and 3% PE.

## SAVANE

Ref. 54170CO



white 1501



tornado 1503



whisper 1502

Outdoor fabrics are waterproof 100% acrylic.



## Ambients

---

