

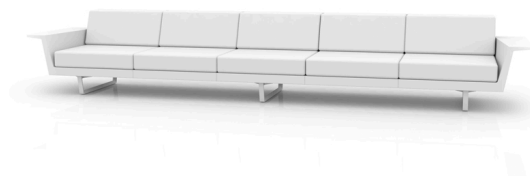


## DELTA SOFA 5 SEAT

By Jorge Pensi

Delta collection is made to fit in with exterior or interior contemporary spaces. The injected aluminum base and extracted aluminum column make it ideal for use in the open air, due to the weather-resistant properties of these materials. The folding top and the design of the base enables the tables to be lined up one against the other to save space when they are not in use. The goal of the DELTA chair was to create a timeless product that constantly seeks to strike a balance between realism and surrealism—matter and antimatter, abstraction and emotion. The goal was to maximize emotions while minimizing resources, questioning the common logic of something new.

View online: <https://www.vondom.com/products/76012>



### Features

#### Description

Modular sofa made of polyethylene resin by rotational moulding with tubular structure made of aluminium and legs made of cast aluminium. 100% Recyclable. Item suitable for indoor and outdoor use. Available in different finishes.

#### Weight

117.01 Kg

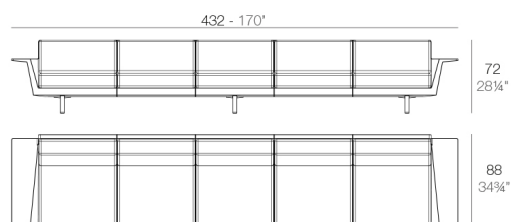
#### Includes

CREVIN Upholstery fabric, that as and natural appearance and can be easy cleaned by washing machines, allowing an easy removal of mildew. Suitable for indoor and outdoor use

GLAD Soft and cozy fabric suitable for indoor and outdoor use.

NAUTIC Soft leather like fabric suitable for indoor and outdoor use. Stantard option for upholstery.

SILVERTEX Vinyl fabric suitable for indoor and outdoor use. Special option for upholstery.



DELTA Sofá Modular 5 plazas  
DELTA Sectinal Sofa 5 seats

### Finishes

#### BASIC

Ref. 76012

Matt Polyethylene

#### LACQUERED

Ref. 76012F

Lacquered Polyethylene

#### COLOR

ICE  
WHITE









#### BASIC



#### LACQUERED / LACADO



---

BLACK		
BRONZE		
STEEL		
ANTHRACITE		
RED		
PISTACHIO		
ORANGE		
KHAKI		
NAVY		
TAUPE		
PLUM		
ECRU		
BEIGE		