

Faz 3-legged double table base

by Ramón Esteve

Faz is a modular collection of outdoor furniture and planters designed by Ramón Esteve for Vondom. He is the architect of harmony, serenity, timelessness and universality, and he has created mineral and emphatic shapes that make Faz a design that contextualizes with homes and installations. An ambience, encircling as a result of the blissful combination of the material and lighting, so that the sole sensation would be its fusion.



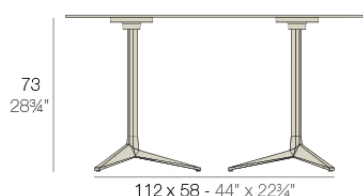
Info

Description

Extruded aluminum tube with cast aluminum base coated with epoxy baked painting. Item suitable for indoor and outdoor use. Table top not included.

Weight: 8.39 Kg

DOUBLE BASE - BASE DOBLE



fixed top / fijo *ref. 54166*

collapsible top / abatible *ref. 54166T*

FAZ BASE DOBLE 112x58 H73

FAZ DOUBLE BASE 44x22 $\frac{3}{4}$ " H28 $\frac{3}{4}$ "

TABLE TOPS OPTIONS - OPCIONES SOBRES



119 x 69 cm
46 $\frac{3}{4}$ " x 27 $\frac{1}{4}$ "

Finishes

finishes

Fixed

Ref. 54166



white



british gray



traffic gray



black



ecru



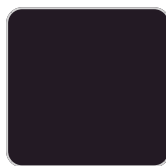
crema



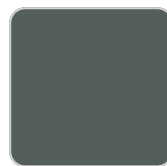
castoro fiber



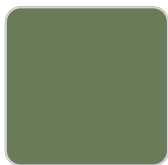
bronze



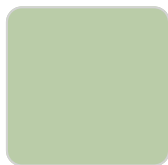
notte blue



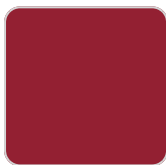
modo green



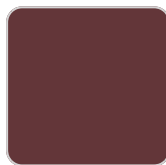
pickle



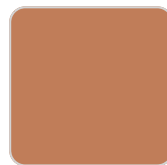
almond



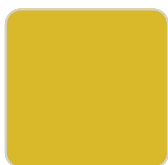
red



purjai red



melon



mostaza

Powder coated aluminum base with non collapsable attachment made of polyamide and fiber glass

COLLAPSIBLE TOP

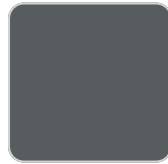
Ref. 54166T



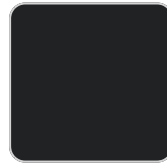
white



british gray



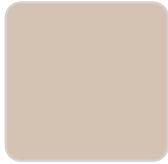
traffic gray



black



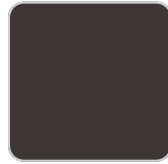
ecru



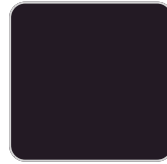
crema



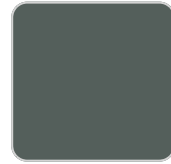
castoro fiber



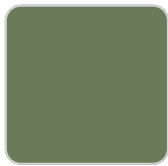
bronze



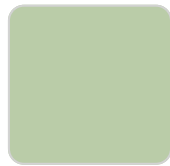
notte blue



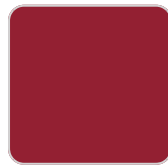
modo green



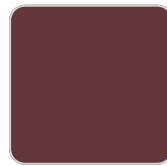
pickle



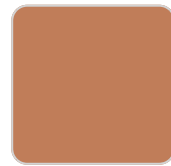
almond



red



purjai red



melon



mostaza

Powder coated aluminum base with 90° collapsable attachment made of polyamide and fiber glass

Ambients

