

Products / Dining Tables / Faz Table XL 300x120x72

# Faz table xl 300x120x72

by Ramón Esteve

Faz is a modular collection of outdoor furniture and planters designed by Ramón Esteve for Vondom. He is the architect of harmony, serenity, timelessness and universality, and he has created mineral and emphatic shapes that make Faz a design that contextualizes with homes and installations. An ambience, encircling as a result of the blissful combination of the material and lighting, so that the sole sensation would be its fusion.



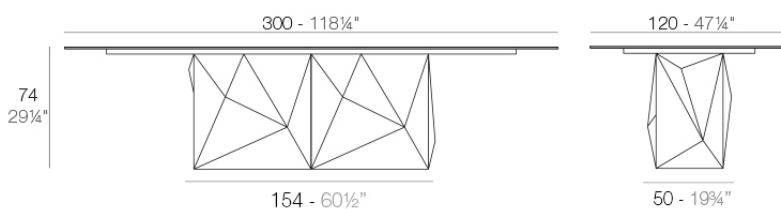
# Info

---

## Description

Made of polyethylene resin by rotational moulding. 100% Recyclable. Item suitable for indoor and outdoor use. Available in different finishes.

Weight: 162.1 Kg



FAZ Mesa XL 300 x 120  
FAZ Dining Table XL 118 1/4" x 47 1/4"

# Finishes

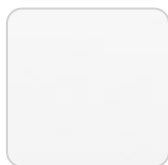
---

---

Ref. 54017B



modo green



white



black

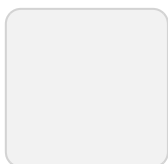
SOLID CORE

finishes

---

BASIC

Ref. 54017DB



ice

Matt Polyethylene

LACQUERED

Ref. 54017F



modo green



purjai red



white



black



bronze



steel



anthracite



champany



red



khaki



taupe



ecru



beige

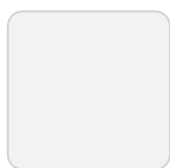
## Lacquered Polyethylene

## lighting

---

### WHITE LED

Ref. 54017W

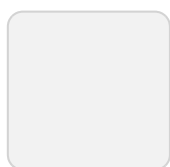


ice

White internally lit unit with LED technology. Available only in matte ice white finish.

### RGBW LED

Ref. 54017L

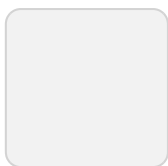


ice

Unit with internal lighting with RGBW LED technology and remote control unit for switching colors. Available only in matte ice white finish. Remote control included.

RGBW LED DMX

## Ref. 54017D

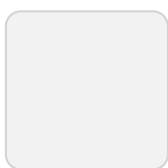


ice

Unit with internal lighting with RGBW LED technology and remote control unit for switching colors. Also controlled by DMX-1024 (wireless), enabling communication between one or more products simultaneously via the DMX transmitter (not included). There are two options to choose from: Professional XLR DMX and Home WIFI DMX. (Remote control included). Optional battery

## RGBW LED BATTERY

## Ref. 54017DYB

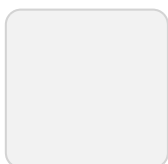


ice

Unit with internal lighting with battery-powered RGBW LED technology. Includes charger and remote control for switching colors and charger. Available only in matte ice white finish.

## RGBW LED DMX BATTERY

## Ref. 54017DY



ice

Unit with internal lighting with RGBW LED technology and remote control unit for switching colors. Also controlled by DMX-1024 (wireless), enabling communication between one or more products simultaneously via the DMX transmitter (not included). There are two options to choose from: Professional XLR

DMX and Home WIFI DMX. (Remote control included).

## tabletops

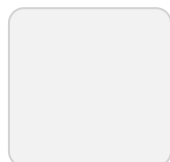
---

HPL

Ref. VVAR03381



orange



ice



notte blue



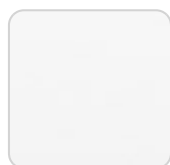
crema



green



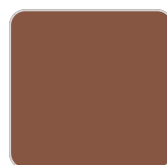
purjai red



white



black



bronze



steel



anthracite



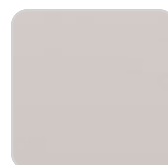
red



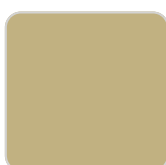
khaki



taupe



ecru



beige

HPL black edge

## solidcore

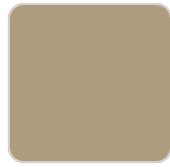
---

Solid Core

Ref. VVAR03382



oak1



oak2

