

Frame aluminium table 120x120x74

by Ramón Esteve

Frame, outdoor collection by Ramon Esteve, comes from generating serene and timeless shapes using the framework as elementary geometry. The endless possibilities offered by the material using advanced technology, was the motivation to explore the limits.

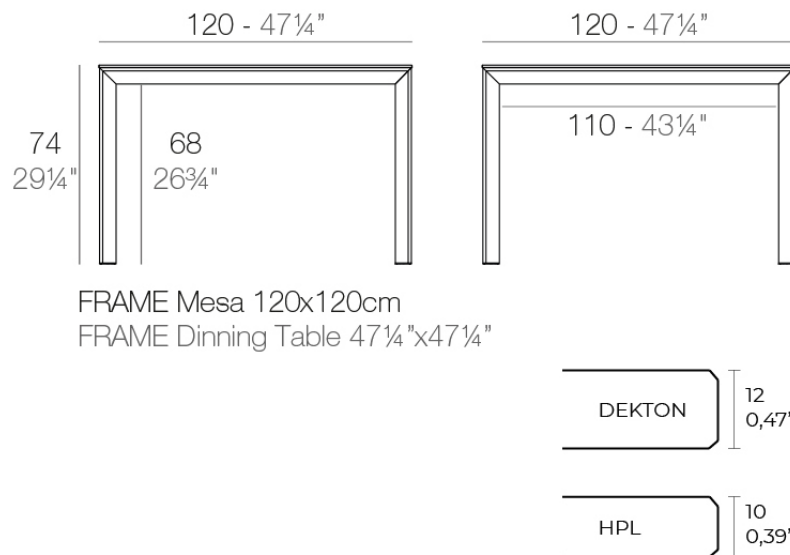


Info

Description

Extruded aluminum with cast lacquered aluminum base. HPL Table top ó Dekton Table top. Item suitable for indoor and outdoor use. HPL Table top.

Weight: 30.02 Kg



Finishes

finishes

ALUMINIUM
Ref. 54235FM



white



british gray



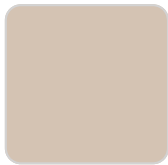
traffic gray



black



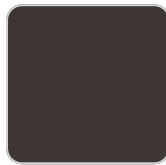
ecru



crema



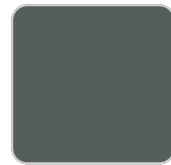
castoro fiber



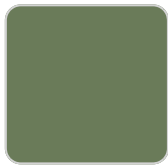
cacao



notte blue



modo green



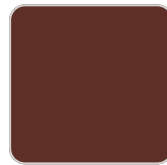
pickle



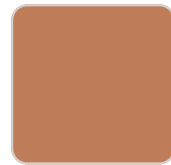
almond



red



purjai red



melon



mostaza

Lacquered aluminium profile.

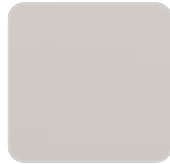
tabletops

HPL
Ref. VVAR02568

VONDOM



black(black edge)



ecru(black edge)



white(black edge)

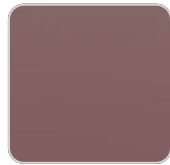
HPL black edge

Solid Core

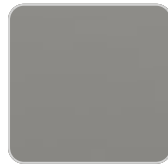
Ref. VVAR02569



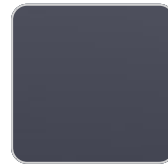
gioia bianco



purjai red



british gray



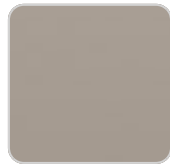
notte blue



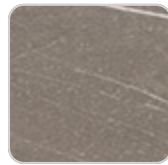
traffic gray



crema



castoro fiber



pulpis gray



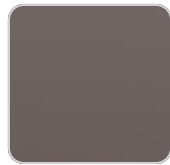
piombo gray



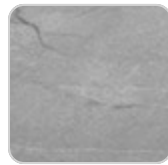
yule brown



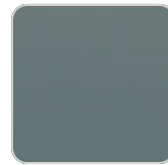
kandia black



cacao



yule gray



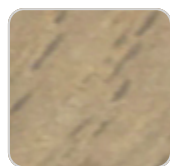
modo green

Solid Core wood

Ref. VVAR02569



oak1



oak2

VONDOM

Dekton

Ref. VVAR02832



kelya



entzo



danae

Ambients

