

Frame aluminium table 160x100x74

by Ramón Esteve

Frame, outdoor collection by Ramon Esteve, comes from generating serene and timeless shapes using the framework as elementary geometry. The endless possibilities offered by the material using advanced technology, was the motivation to explore the limits.

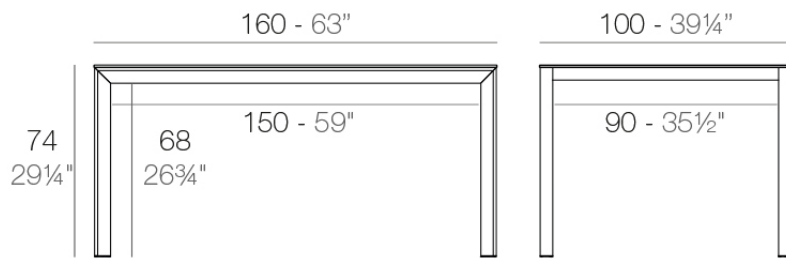


Info

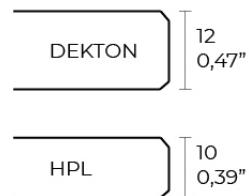
Description

Extruded aluminum with cast lacquered aluminum base. HPL Table top ó Dekton Table top. Item suitable for indoor and outdoor use. HPL Table top.

Weight: 32.65 Kg



FRAME Mesa 160x100cm
FRAME Dinning Table 63"x39 1/4"



Finishes

finishes

ALUMINIUM
Ref. 54240FM



white



british gray



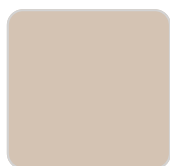
traffic gray



black



ecru



crema



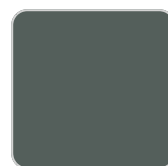
castoro fiber



cacao



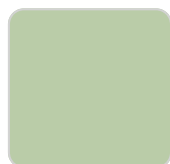
notte blue



modo green



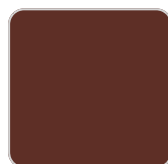
pickle



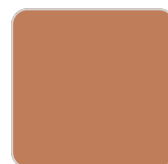
almond



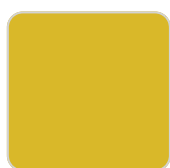
red



purjai red



melon



mostaza

Lacquered aluminium profile.

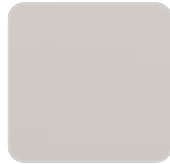
tabletops

HPL
Ref. VVAR02593

VONDOM



black(black edge)



ecru(black edge)

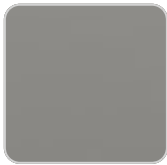


white(black edge)

HPL black edge

Solid Core

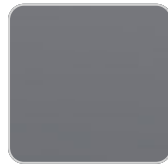
Ref. VVAR02594



british gray



notte blue



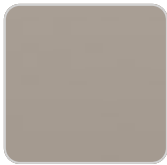
traffic gray



crema



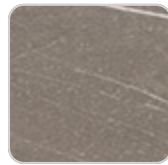
yule brown



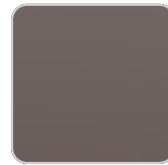
castoro fiber



piombo gray



pulpis gray



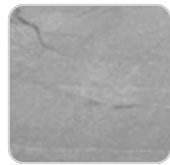
cacao



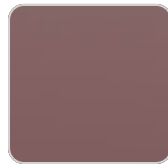
kandia black



modo green



yule gray



purjai red



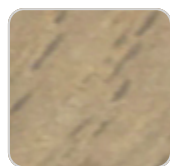
gioia bianco

Solid Core wood

Ref. VVAR02594



oak1



oak2

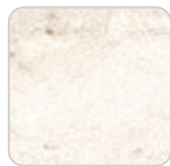
VONDOM

Dekton

Ref. VVAR02838



entzo



danae



kelya

Ambients

