

Frame aluminium table 160x80x74

by Ramón Esteve

Frame, outdoor collection by Ramon Esteve, comes from generating serene and timeless shapes using the framework as elementary geometry. The endless possibilities offered by the material using advanced technology, was the motivation to explore the limits.

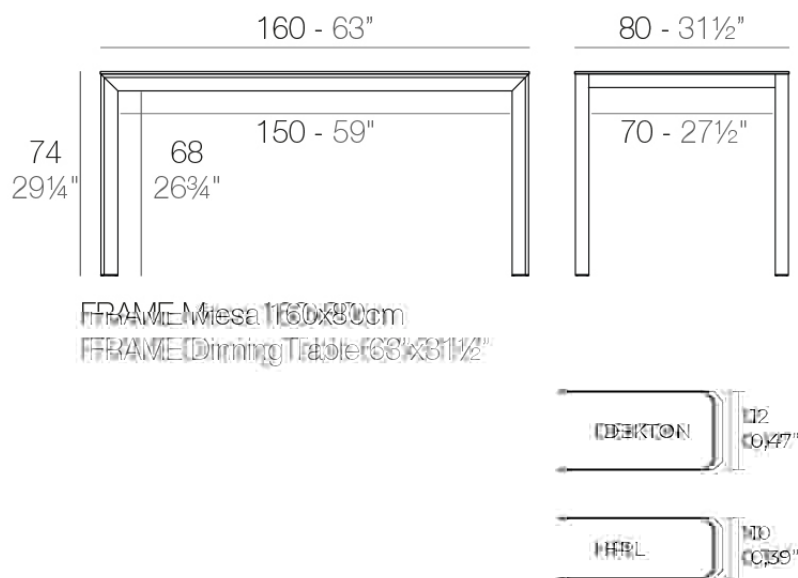


Info

Description

Extruded aluminum with cast lacquered aluminum base. HPL Table top ó Dekton Table top. Item suitable for indoor and outdoor use. HPL Table top.

Weight: 27.72 Kg



Finishes

finishes

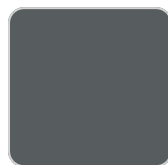
ALUMINIUM
Ref. 54236FM



white



british gray



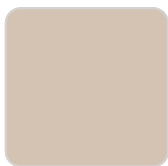
traffic gray



black



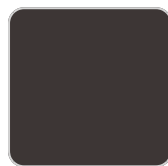
ecru



crema



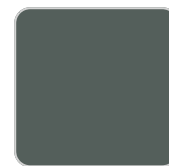
castoro fiber



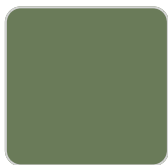
cacao



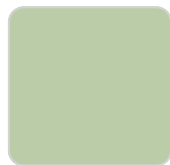
notte blue



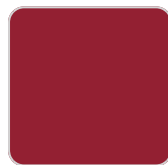
modo green



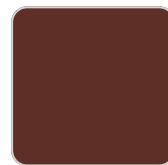
pickle



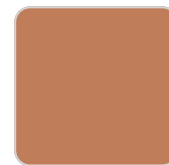
almond



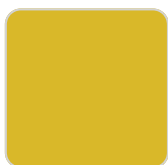
red



purjai red



melon



mostaza

Lacquered aluminium profile.

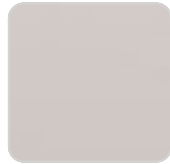
tabletops

HPL
Ref. VVAR02573

VONDOM



black(black edge)



ecru(black edge)



white(black edge)

HPL black edge

Solid Core

Ref. VVAR02574



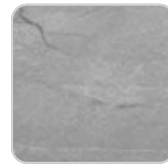
cacao



kandia black



modo green



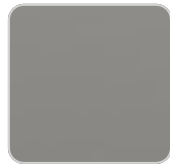
yule gray



gioia bianco



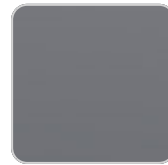
purjai red



british gray



notte blue



traffic gray



crema



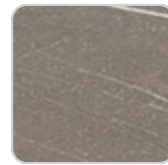
yule brown



castoro fiber



piombo gray



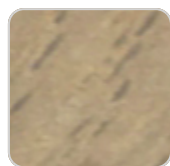
pulpis gray

Solid Core wood

Ref. VVAR02574



oak1



oak2

VONDOM

Dekton

Ref. VVAR02833



kelya



entzo



danae

Ambients

