

Frame aluminium table 160x90x74

by Ramón Esteve

Frame, outdoor collection by Ramon Esteve, comes from generating serene and timeless shapes using the framework as elementary geometry. The endless possibilities offered by the material using advanced technology, was the motivation to explore the limits.

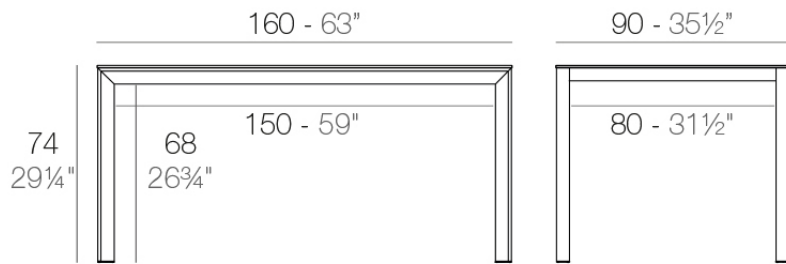


Info

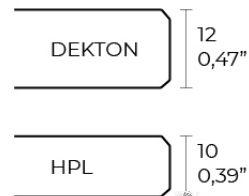
Description

Extruded aluminum with cast lacquered aluminum base. HPL Table top ó Dekton Table top. Item suitable for indoor and outdoor use. HPL Table top.

Weight: 30.13 Kg



FRAME Mesa 160x90cm
FRAME Dining Table 63"x35 1/2"



Finishes

finishes

ALUMINIUM
Ref. 54238FM



white



british gray



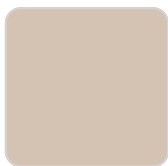
traffic gray



black



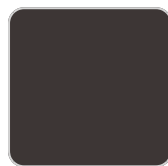
ecru



crema



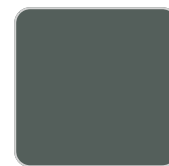
castoro fiber



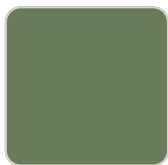
cacao



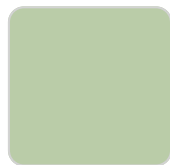
notte blue



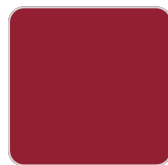
modo green



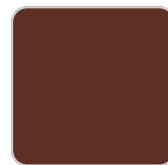
pickle



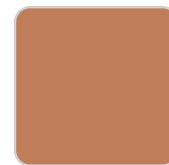
almond



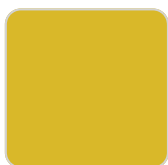
red



purjai red



melon



mostaza

Lacquered aluminium profile.

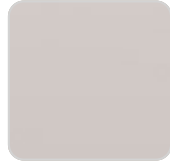
tabletops

HPL
Ref. VVAR02581

VONDOM



black(black edge)



ecru(black edge)



white(black edge)

HPL black edge

Solid Core

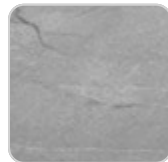
Ref. VVAR02582



kandia black



cacao



yule gray



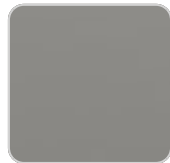
modo green



gioia bianco



purjai red



british gray



notte blue



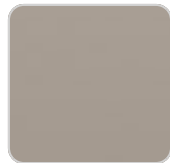
traffic gray



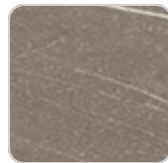
crema



yule brown



castoro fiber



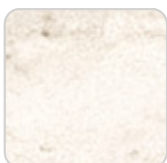
pulpis gray



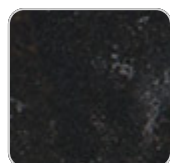
piombo gray

Dekton

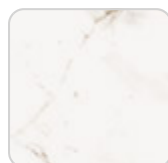
Ref. VVAR02835



danae



kelya



entzo

Ambients

