

Frame aluminium table 180x80x74

by Ramón Esteve

Frame, outdoor collection by Ramon Esteve, comes from generating serene and timeless shapes using the framework as elementary geometry. The endless possibilities offered by the material using advanced technology, was the motivation to explore the limits.

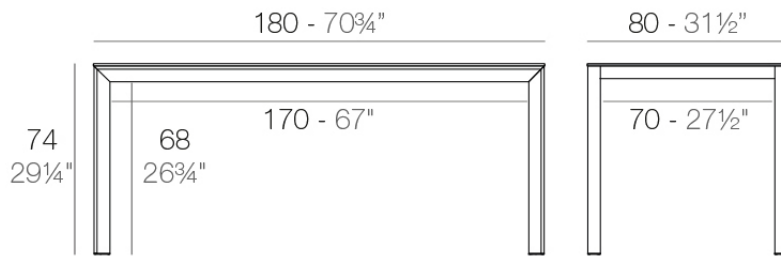


Info

Description

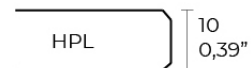
Extruded aluminum with cast lacquered aluminum base. HPL Table top ó Dekton Table top. Item suitable for indoor and outdoor use. HPL Table top.

Weight: 30.47 Kg



FRAME Mesa 180x80cm

FRAME Dinning Table 70 3/4"x31 1/2"



Finishes

finishes

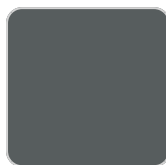
ALUMINIUM
Ref. 54237FM



white



british gray



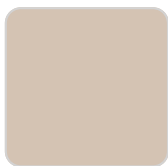
traffic gray



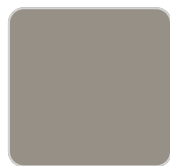
black



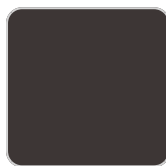
ecru



crema



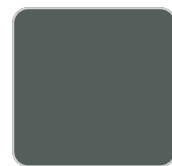
castoro fiber



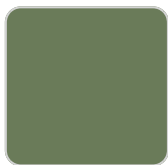
cacao



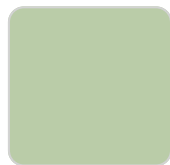
notte blue



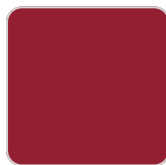
modo green



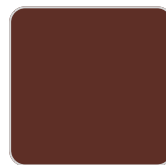
pickle



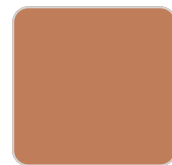
almond



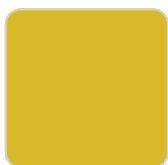
red



purjai red



melon



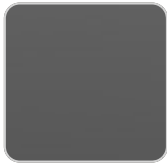
mostaza

Lacquered aluminium profile.

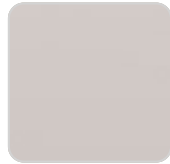
tabletops

HPL
Ref. VVAR02577

VONDOM



black(black edge)



ecru(black edge)

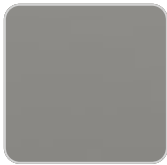


white(black edge)

HPL black edge

Solid Core

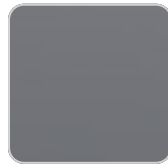
Ref. VVAR02578



british gray



notte blue



traffic gray



crema



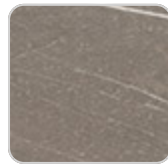
castoro fiber



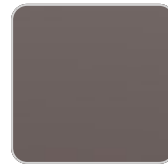
yule brown



piombo gray



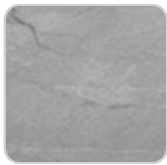
pulpis gray



cacao



kandia black



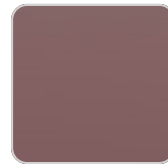
yule gray



modo green



gioia bianco



purjai red

Solid Core wood

Ref. VVAR02578



oak1



oak2

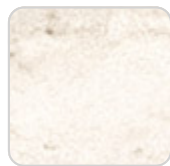
VONDOM

Dekton

Ref. VVAR02834



entzo



danae



kelya

Ambients

