

## Frame aluminium table 200x100x74

by Ramón Esteve

Frame, outdoor collection by Ramon Esteve, comes from generating serene and timeless shapes using the framework as elementary geometry. The endless possibilities offered by the material using advanced technology, was the motivation to explore the limits.



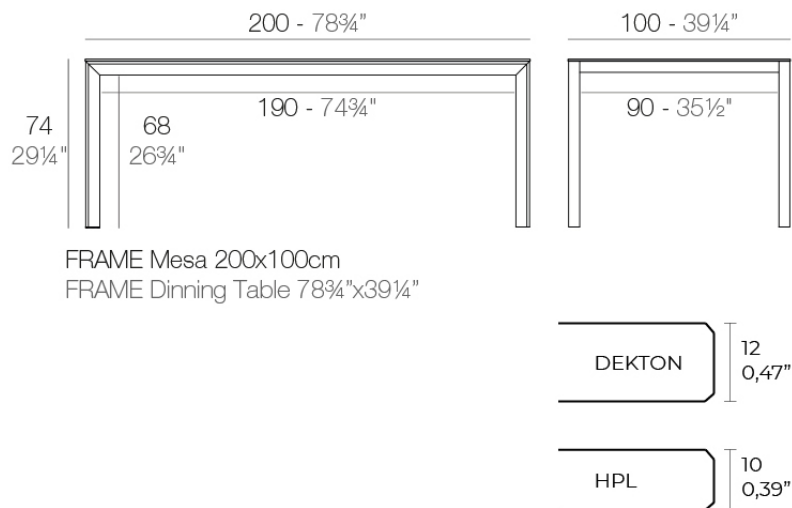
## Info

---

### Description

Extruded aluminum with cast lacquered aluminum base. HPL Table top ó Dekton Table top. Item suitable for indoor and outdoor use. HPL Table top.

Weight: 39.15 Kg



## Finishes

---

### finishes

---

ALUMINIUM  
Ref. 54241FM



white



british gray



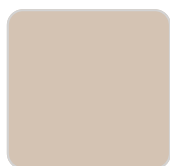
traffic gray



black



ecru



crema



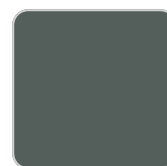
castoro fiber



cacao



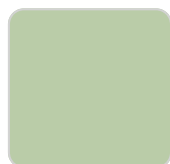
notte blue



modo green



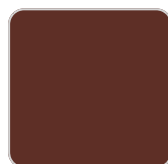
pickle



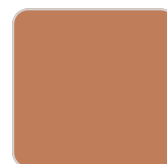
almond



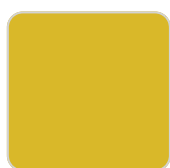
red



purjai red



melon



mostaza



navy

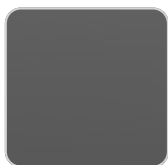
Lacquered aluminium profile.

### tabletops

---

HPL  
Ref. VVAR02595

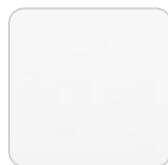
# VONDOM



black(black edge)



ecru(black edge)



white(black edge)

## HPL black edge

## Solid Core

Ref. VVAR02596



traffic gray



crema



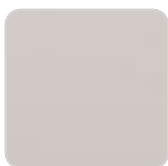
yule brown



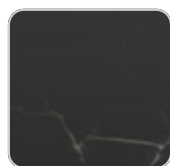
castoro fiber



pulpis gray



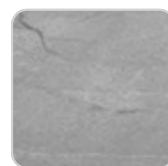
piombo gray



kandia black



cacao



yule gray



modo green



gioia bianco



purjai red



british gray



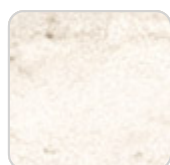
notte blue

## Dekton

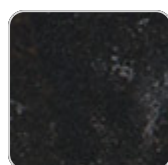
Ref. VVAR02839



entzo



danae



kelya

## Ambients

---

