

## Frame aluminium table 200x90x74

by Ramón Esteve

Frame, outdoor collection by Ramon Esteve, comes from generating serene and timeless shapes using the framework as elementary geometry. The endless possibilities offered by the material using advanced technology, was the motivation to explore the limits.



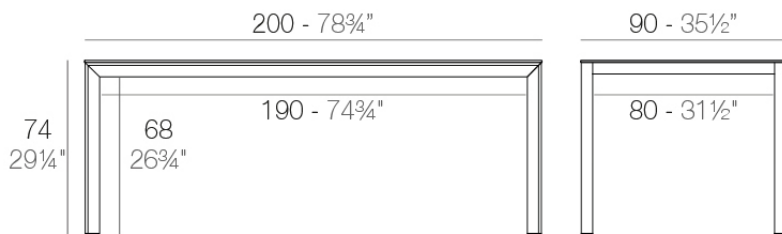
## Info

---

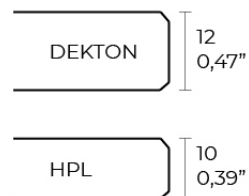
### Description

Extruded aluminum with cast lacquered aluminum base. HPL Table top ó Dekton Table top. Item suitable for indoor and outdoor use. HPL Table top.

Weight: 36.12 Kg



FRAME Mesa 200x90cm  
FRAME Dinning Table 78 3/4"x35 1/2"



## Finishes

---

### finishes

---

ALUMINIUM  
Ref. 54239FM



white



british gray



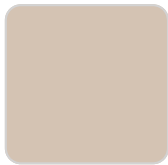
traffic gray



black



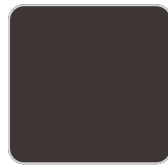
ecru



crema



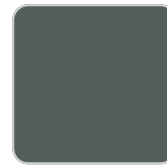
castoro fiber



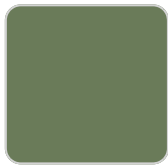
cacao



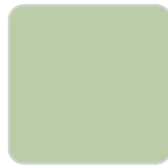
notte blue



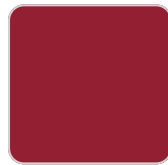
modo green



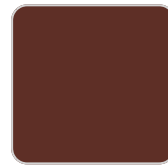
pickle



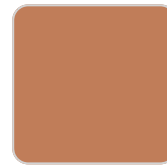
almond



red



purjai red



melon



mostaza

Lacquered aluminium profile.

### tabletops

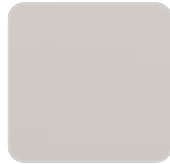
---

HPL  
Ref. VVAR02583

# VONDOM



black(black edge)



ecru(black edge)

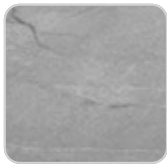


white(black edge)

HPL black edge

Solid Core

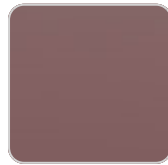
Ref. VVAR02584



yule gray



modo green



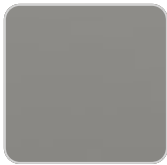
purjai red



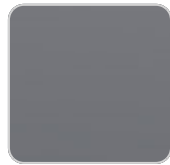
gioia bianco



notte blue



british gray



traffic gray



crema



yule brown



castoro fiber



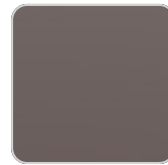
pulpis gray



piombo gray



kandia black



cacao

## Ambients

---

