

Frame aluminium table 250x100x74

by Ramón Esteve

Frame, outdoor collection by Ramon Esteve, comes from generating serene and timeless shapes using the framework as elementary geometry. The endless possibilities offered by the material using advanced technology, was the motivation to explore the limits.

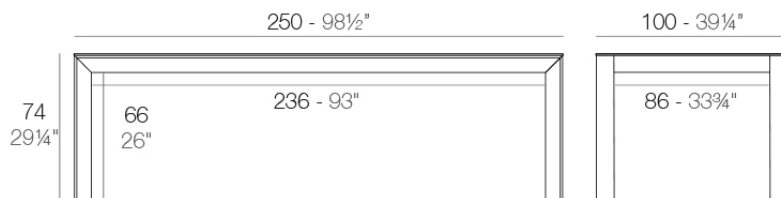


Info

Description

Extruded aluminum with cast lacquered aluminum base. HPL Table top ó Dekton Table top. Item suitable for indoor and outdoor use. HPL Table top.

Weight: 52.88 Kg



FRAME Mesa 250x100cm
FRAME Dinning Table 98 1/2"x39 1/4"

Finishes

finishes

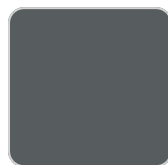
ALUMINIUM
Ref. 54247FB



white



british gray



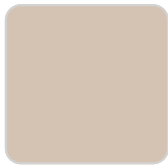
traffic gray



black



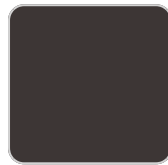
ecru



crema



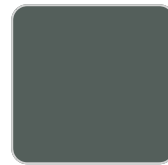
castoro fiber



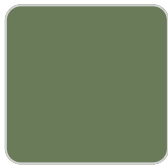
cacao



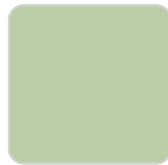
notte blue



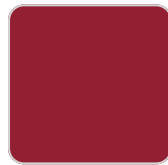
modo green



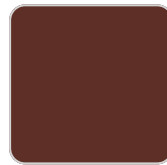
pickle



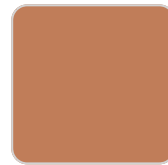
almond



red



purjai red



melon



mostaza

Lacquered aluminium profile.

tabletops

HPL
Ref. VVAR02793

