

Frame aluminium table 300x120x74

by Ramón Esteve

Frame, outdoor collection by Ramon Esteve, comes from generating serene and timeless shapes using the framework as elementary geometry. The endless possibilities offered by the material using advanced technology, was the motivation to explore the limits.

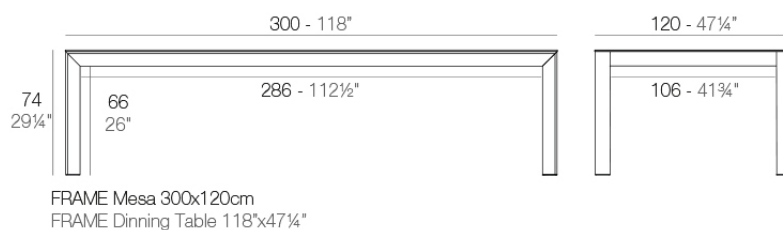


Info

Description

Extruded aluminum with cast lacquered aluminum base. HPL Table top ó Dekton Table top. Item suitable for indoor and outdoor use. HPL Table top.

Weight: 70.7 Kg



Finishes

finishes

ALUMINIUM
Ref. 54242FB



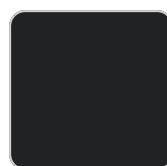
white



british gray



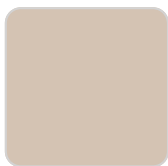
traffic gray



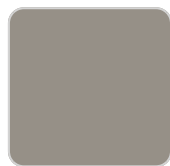
black



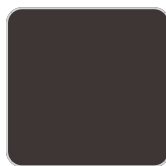
ecru



crema



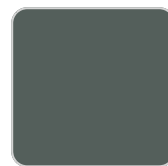
castoro fiber



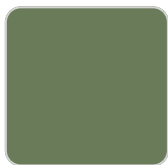
cacao



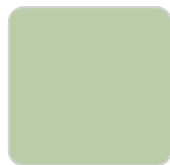
notte blue



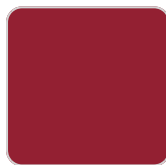
modo green



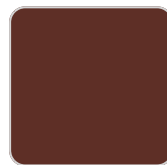
pickle



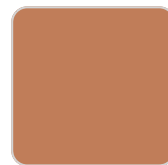
almond



red



purjai red



melon



mostaza

Lacquered aluminium profile.

tabletops

Solid Core
Ref. VVAR02598

VONDOM



traffic gray



crema



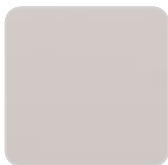
yule brown



castoro fiber



pulpis gray



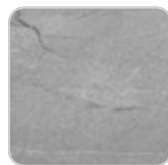
piombo gray



kandia black



cacao



yule gray



modo green



gioia bianco



purjai red



british gray



notte blue

Solid Core wood Ref. VVAR02598



oak1



oak2

Ambients

