

Frame aluminium table 60x60x74

by Ramón Esteve

Frame, outdoor collection by Ramon Esteve, comes from generating serene and timeless shapes using the framework as elementary geometry. The endless possibilities offered by the material using advanced technology, was the motivation to explore the limits.

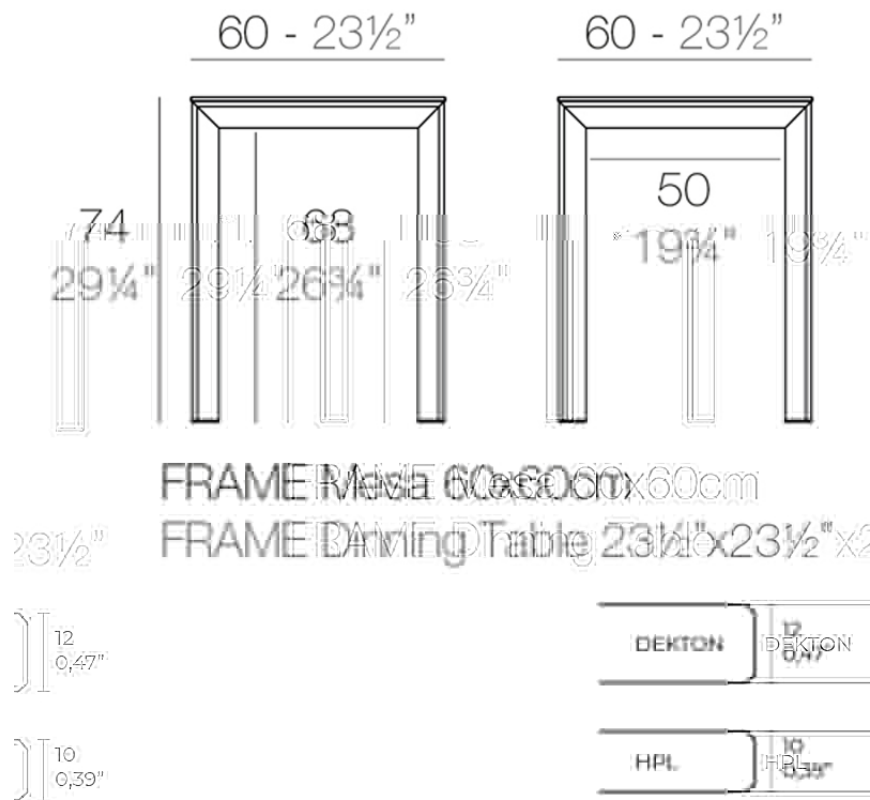


Info

Description

Extruded aluminum with cast lacquered aluminum base. HPL Table top ó Dekton Table top. Item suitable for indoor and outdoor use. HPL Table top.

Weight: 11.88 Kg



Finishes

finishes

ALUMINIUM
Ref. 54230FM



white



british gray



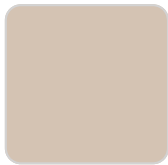
traffic gray



black



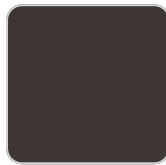
ecru



crema



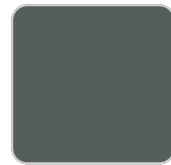
castoro fiber



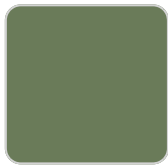
cacao



notte blue



modo green



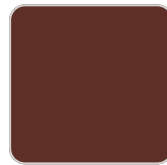
pickle



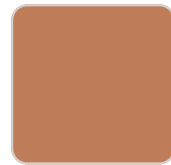
almond



red



purjai red



melon



mostaza

Lacquered aluminium profile.

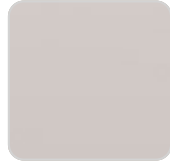
tabletops

HPL
Ref. VVAR02536

VONDOM



black(black edge)



ecru(black edge)



white(black edge)

HPL black edge

Solid Core

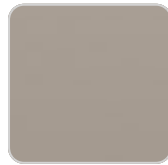
Ref. VVAR02537



crema



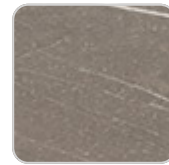
yule brown



castoro fiber



piombo gray



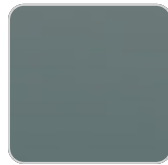
pulpis gray



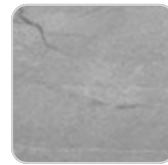
cacao



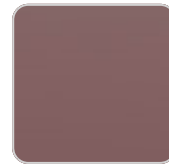
kandia black



modo green



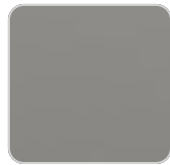
yule gray



purjai red



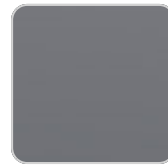
gioia bianco



british gray



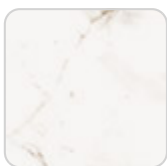
notte blue



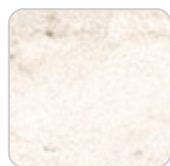
traffic gray

Dekton

Ref. VVAR02827



entzo



danae



kelya

Ambients

