

## Frame aluminium table 70x70x74

by Ramón Esteve

Frame, outdoor collection by Ramon Esteve, comes from generating serene and timeless shapes using the framework as elementary geometry. The endless possibilities offered by the material using advanced technology, was the motivation to explore the limits.



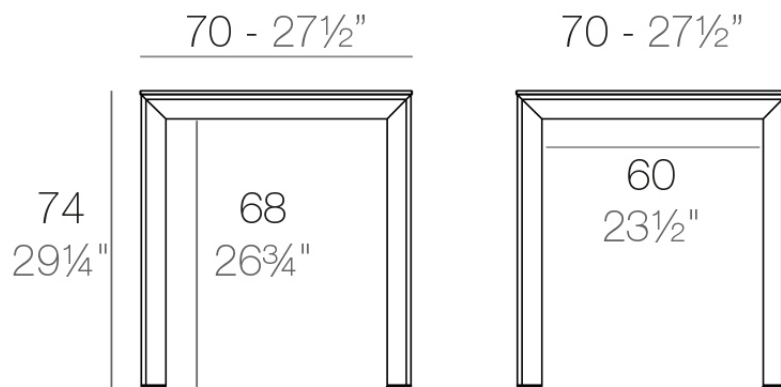
## Info

---

### Description

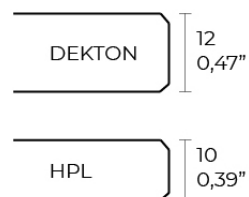
Extruded aluminum with cast lacquered aluminum base. HPL Table top ó Dekton Table top. Item suitable for indoor and outdoor use. HPL Table top.

Weight: 14.23 Kg



FRAME Mesa 70x70cm

FRAME Dining Table 27½"x27½"



## Finishes

---

### finishes

---

ALUMINIUM  
Ref. 54231FM



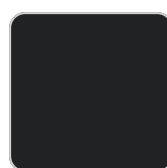
white



british gray



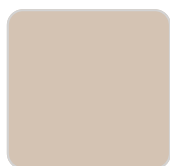
traffic gray



black



ecru



crema



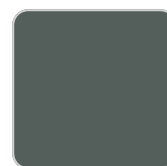
castoro fiber



cacao



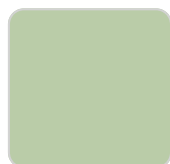
notte blue



modo green



pickle



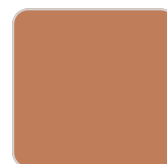
almond



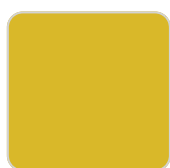
red



purjai red



melon



mostaza

Lacquered aluminium profile.

### tabletops

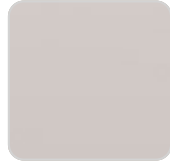
---

HPL  
Ref. VVAR02548

# VONDOM



black(black edge)



ecru(black edge)



white(black edge)

## HPL black edge

## Solid Core

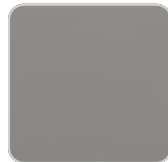
Ref. VVAR02549



gioia bianco



purjai red



british gray



notte blue



traffic gray



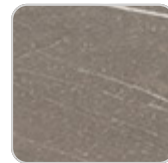
crema



yule brown



castoro fiber



pulpis gray



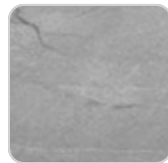
piombo gray



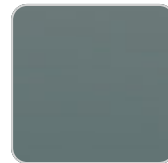
kandia black



cacao



yule gray



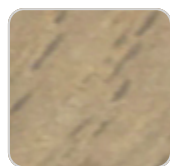
modo green

## Solid Core wood

Ref. VVAR02549



oak1



oak2

# VONDOM

Dekton

Ref. VVAR02828



kelya



entzo



danae

## Ambients

---

