

Frame aluminium table 90x90x74

by Ramón Esteve

Frame, outdoor collection by Ramon Esteve, comes from generating serene and timeless shapes using the framework as elementary geometry. The endless possibilities offered by the material using advanced technology, was the motivation to explore the limits.



Info

Description

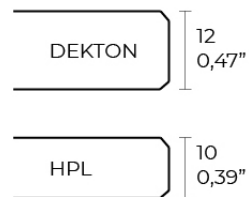
Extruded aluminum with cast lacquered aluminum base. HPL Table top ó Dekton Table top. Item suitable for indoor and outdoor use. HPL Table top.

Weight: 19.63 Kg



FRAME Mesa 90x90cm

FRAME Dinning Table 35½"x35½"



Finishes

finishes

ALUMINIUM
Ref. 54233FM



white



british gray



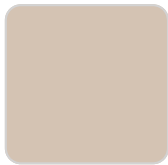
traffic gray



black



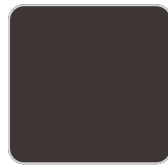
ecru



crema



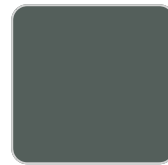
castoro fiber



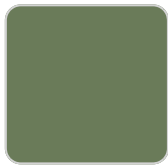
cacao



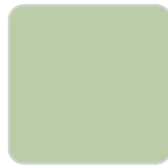
notte blue



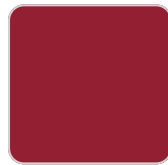
modo green



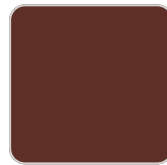
pickle



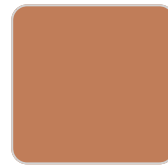
almond



red



purjai red



melon



mostaza

Lacquered aluminium profile.

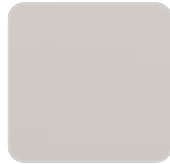
tabletops

HPL
Ref. VVAR02558

VONDOM



black(black edge)



ecru(black edge)

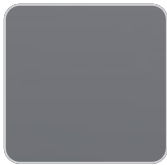


white(black edge)

HPL black edge

Solid Core

Ref. VVAR02559



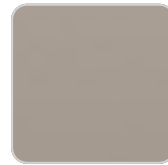
traffic gray



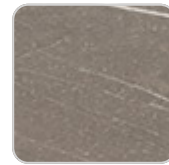
crema



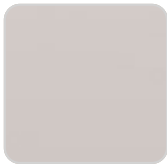
yule brown



castoro fiber



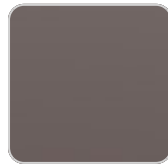
pulpis gray



piombo gray



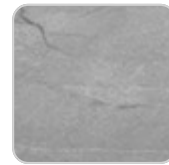
kandia black



cacao



modo green



yule gray



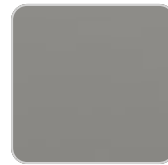
purjai red



gioia bianco



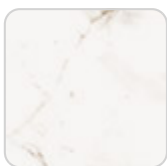
notte blue



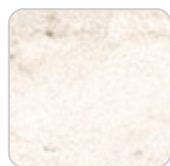
british gray

Dekton

Ref. VVAR02830



entzo



danae



kelya

Ambients

