

## Frame aluminium table 100x100x32

by Ramón Esteve

Frame, outdoor collection by Ramon Esteve, comes from generating serene and timeless shapes using the framework as elementary geometry. The endless possibilities offered by the material using advanced technology, was the motivation to explore the limits.



## Info

---

### Description

Extruded aluminum with cast lacquered aluminum base. HPL Table top ó Dekton Table top. Item suitable for indoor and outdoor use. HPL Table top.

Weight: 20.95 Kg



FRAME Mesa Baja Aluminio 100x100 cm.  
FRAME Low Table Aluminio 39 1/4 x 39 1/4"



## Finishes

---

### finishes

---

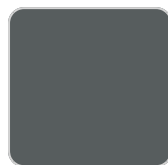
ALUMINIUM  
Ref. 54245FM



white



british gray



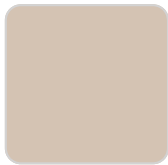
traffic gray



black



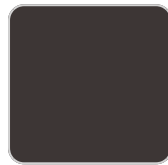
ecru



crema



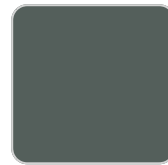
castoro fiber



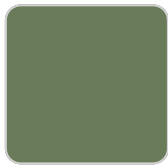
cacao



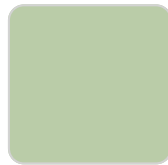
notte blue



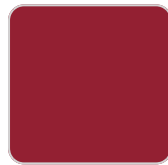
modo green



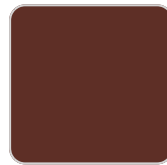
pickle



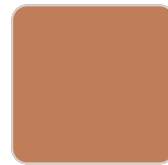
almond



red



purjai red



melon



mostaza

Lacquered aluminium profile.

### tabletops

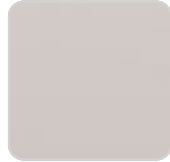
---

HPL  
Ref. VVAR02563

# VONDOM



black(black edge)



ecru(black edge)



white(black edge)

## HPL black edge

## Solid Core

Ref. VVAR02564



crema



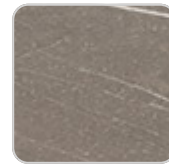
yule brown



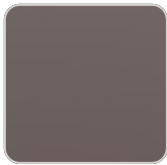
castoro fiber



piombo gray



pulpis gray



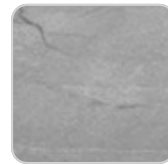
cacao



kandia black



modo green



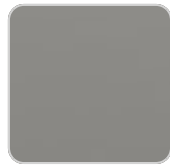
yule gray



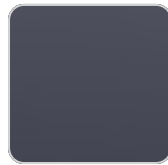
purjai red



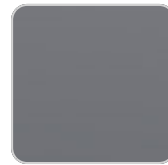
gioia bianco



british gray



notte blue



traffic gray

## Dekton

Ref. VVAR02831



entzo



danae



kelya

## Ambients

---

