

## Frame aluminium table 140x60x105

by Ramón Esteve

Frame, outdoor collection by Ramon Esteve, comes from generating serene and timeless shapes using the framework as elementary geometry. The endless possibilities offered by the material using advanced technology, was the motivation to explore the limits.



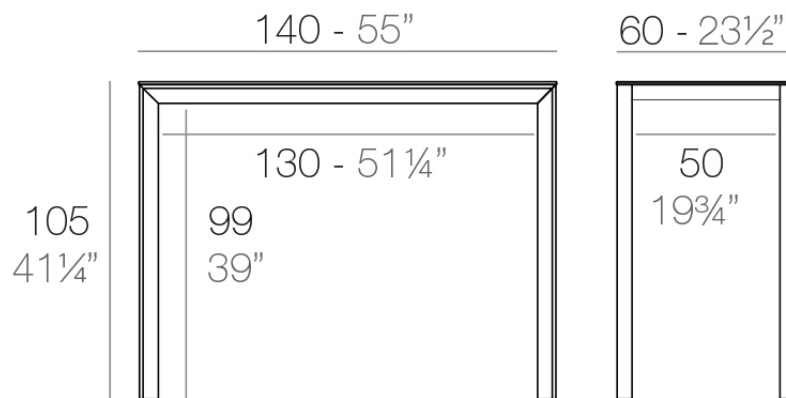
## Info

---

### Description

Extruded aluminum with cast lacquered aluminum base. HPL Table top ó Dekton Table top. Item suitable for indoor and outdoor use. HPL Table top.

Weight: 25.58 Kg



FRAME Mesa Alta Aluminio 140 x 60

FRAME Bar Table Aluminio 55" x 23½"



## Finishes

---

### finishes

---

ALUMINIUM  
Ref. 54243FM



white



british gray



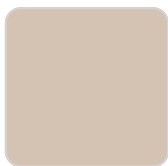
traffic gray



black



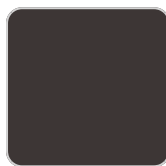
ecru



crema



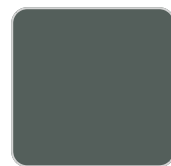
castoro fiber



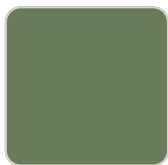
cacao



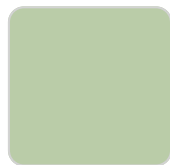
notte blue



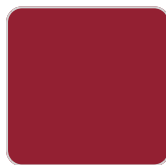
modo green



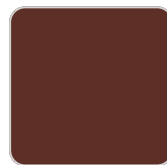
pickle



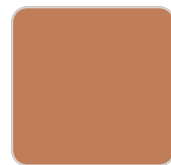
almond



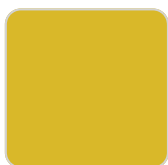
red



purjai red



melon



mostaza

Lacquered aluminium profile.

### tabletops

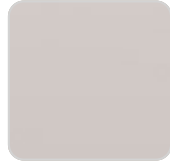
---

HPL  
Ref. VVAR02587

# VONDOM



black(black edge)



ecru(black edge)

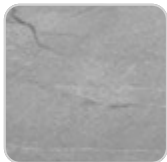


white(black edge)

HPL black edge

Solid Core

Ref. VVAR02588



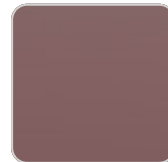
yule gray



modo green



gioia bianco



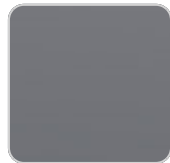
purjai red



british gray



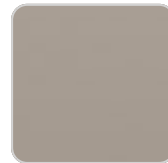
notte blue



traffic gray



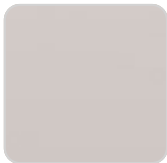
crema



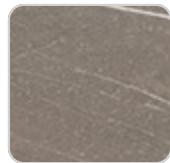
castoro fiber



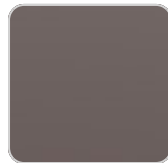
yule brown



piombo gray



pulpis gray



cacao



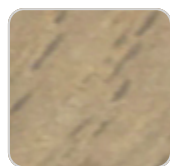
kandia black

Solid Core wood

Ref. VVAR02588



oak1



oak2



# VONDOM

Dekton

Ref. VVAR02837



kelya



entzo



danae

## Ambients

---

