

## Frame aluminium table 200x60x105

by Ramón Esteve

Frame, outdoor collection by Ramon Esteve, comes from generating serene and timeless shapes using the framework as elementary geometry. The endless possibilities offered by the material using advanced technology, was the motivation to explore the limits.



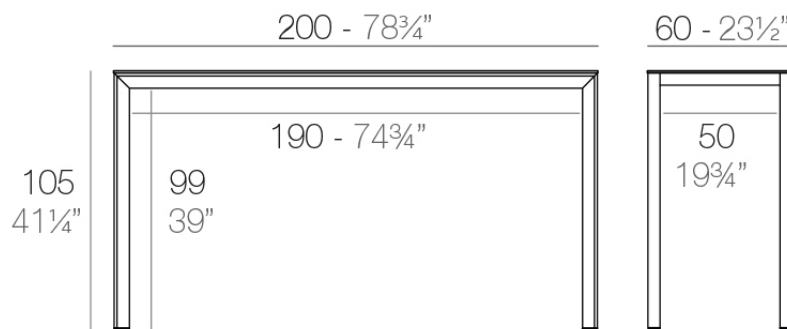
## Info

---

### Description

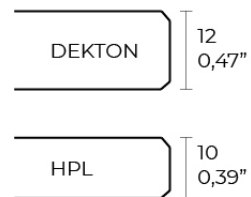
Extruded aluminum with cast lacquered aluminum base. HPL Table top ó Dekton Table top. Item suitable for indoor and outdoor use. HPL Table top.

Weight: 30.15 Kg



FRAME Mesa Alta Aluminio 200 x 60

FRAME Bar Table Aluminio 78¾" x 23½"



## Finishes

---

### finishes

---

ALUMINIUM  
Ref. 54244FM



white



british gray



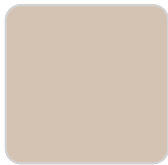
traffic gray



black



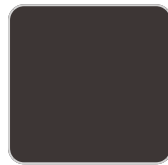
ecru



crema



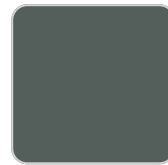
castoro fiber



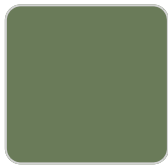
cacao



notte blue



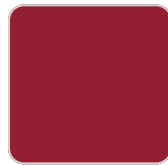
modo green



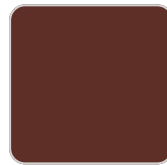
pickle



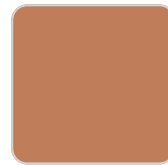
almond



red



purjai red



melon



mostaza

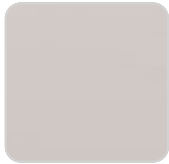
Lacquered aluminium profile.

### tabletops

---

HPL  
Ref. VVAR02607

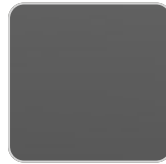
# VONDOM



ecru(black edge)



white(black edge)



black(black edge)

## HPL black edge

## Solid Core

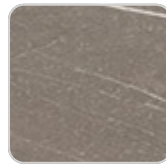
Ref. VVAR02608



yule brown



castoro fiber



pulpis gray



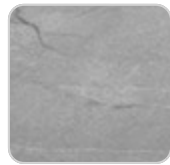
piombo gray



kandia black



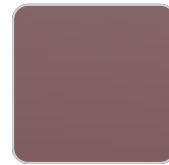
cacao



yule gray



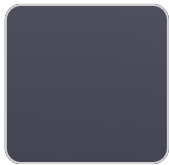
modo green



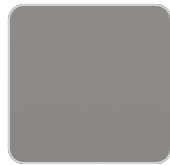
purjai red



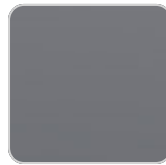
gioia bianco



notte blue



british gray



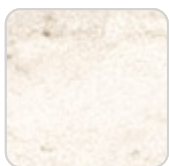
traffic gray



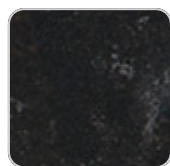
crema

## Dekton

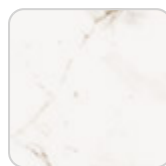
Ref. VVAR02840



danae



kelya



entzo

## Ambients

---

