

## Mari-sol 4-legged double table base

by Eugeni Quitllet

Mari-sol Collection, designed by Eugeni Quitllet for Vondom, is composed by a design table that **combines technology in its function with sensuality** in its shape. The answer for adorning terraces around the world.



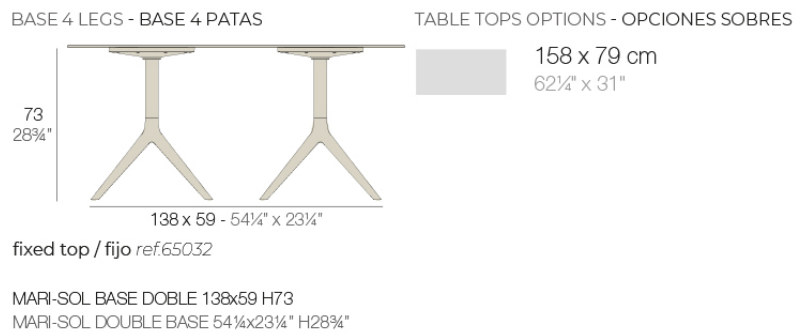
## Info

---

### Description

Extruded aluminum tube with cast aluminum base coated with epoxy baked painting. Item suitable for indoor and outdoor use. Table top not included.

Weight: 9.8 Kg



## Finishes

---

### finishes

---

Fixed

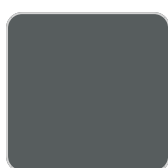
Ref. 65032



white



british gray



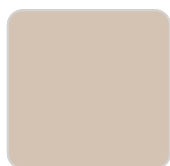
traffic gray



black



ecru



crema



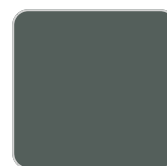
castoro fiber



cacao



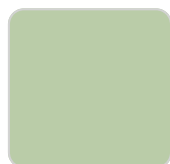
notte blue



modo green



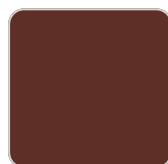
pickle



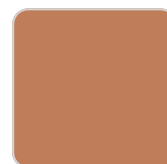
almond



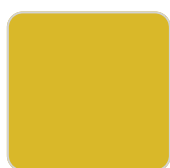
red



purjai red



melon



mostaza

Powder coated aluminum base with non collapsable attachment made of polyamide and fiber glass

tabletops

---

HPL

Ref. 66413

HPL black edge

Solid Core

Ref. 66413B

SOLID CORE

