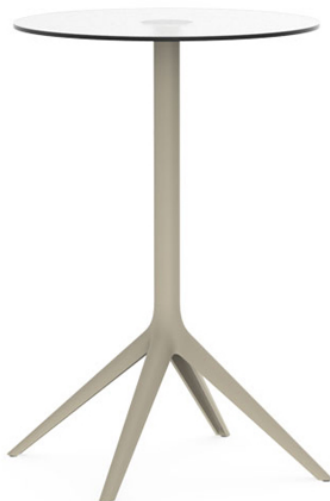


Mari-sol table base ø80 h:105cm

by Eugeni Quitllet

Mari-sol Collection, designed by Eugeni Quitllet for Vondom, is composed by a design table that **combines technology in its function with sensuality** in its shape. The answer for adorning terraces around the world.



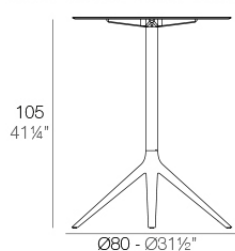
Info

Description

Extruded aluminum tube with cast aluminum base coated with epoxy baked painting. Item suitable for indoor and outdoor use. Table top not included.

Weight: 4.67 Kg

BASE 4 LEGS - BASE 4 PATAS



fixed top / fijo ref: 65020

fixed for glass / fijo para vidrio ref: 65020V

MARI-SOL BASE MESA Ø80 H105

MARI-SOL TABLE BASE Ø31 1/2" H41 1/4"

TABLE TOPS OPTIONS - OPCIONES SOBRES

69 x 69 cm
27 1/4" x 27 1/4"

Finishes

finishes

Fixed
Ref. 65020



white



british gray



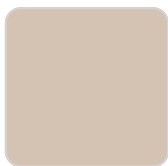
traffic gray



black



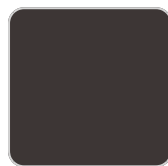
ecru



crema



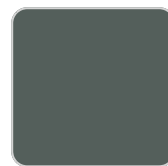
castoro fiber



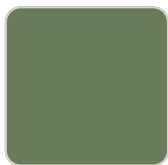
cacao



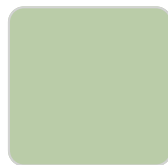
notte blue



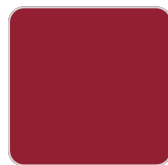
modo green



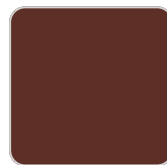
pickle



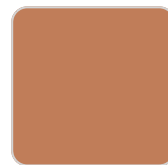
almond



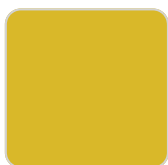
red



purjai red



melon



mostaza

Powder coated aluminum base with non collapsable attachment made of polyamide and fiber glass

Fixed glass
Ref. 65020V

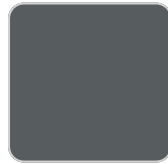
VONDOM



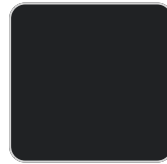
white



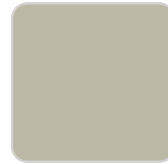
british gray



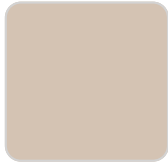
traffic gray



black



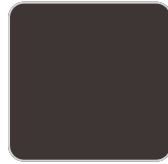
ecru



crema



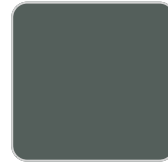
castoro fiber



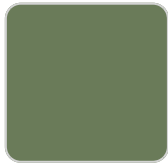
cacao



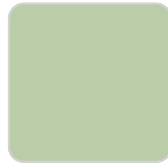
notte blue



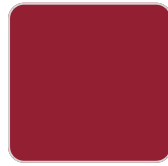
modo green



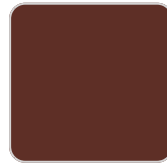
pickle



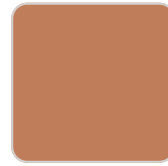
almond



red



purjai red



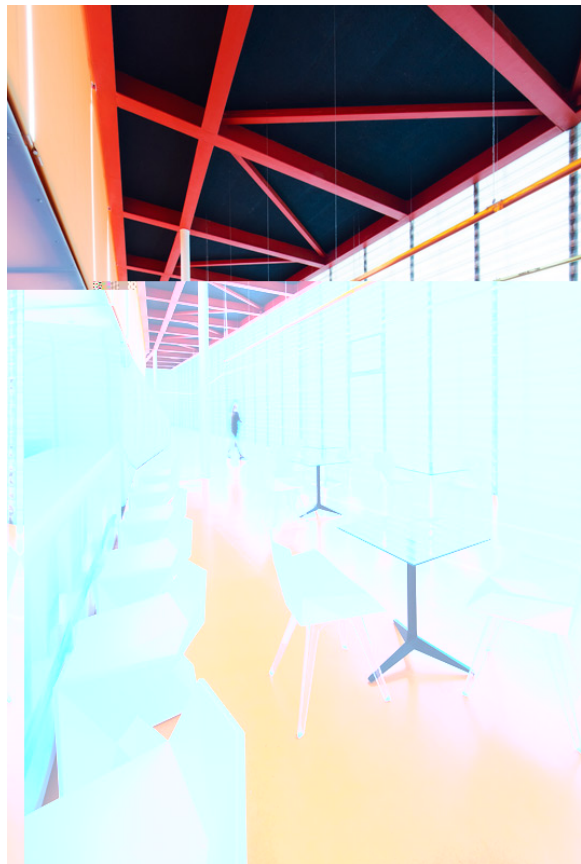
melon



mostaza

Powder coated aluminum base with non collapsable aluminum attachment powder coated, made exclusively for our glass tops.

Ambients



VONDOM

