

Mari-sol table base h:50cm

by Eugeni Quitllet

Mari-sol Collection, designed by Eugeni Quitllet for Vondom, is composed by a design table that **combines technology in its function with sensuality** in its shape. The answer for adorning terraces around the world.



Info

Description

Extruded aluminum tube with cast aluminum base coated with epoxy baked painting. Item suitable for indoor and outdoor use. Table top not included.

Weight: 3.53 Kg

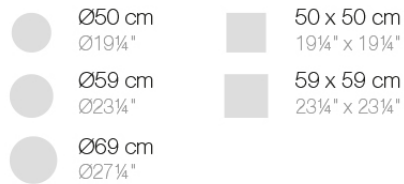
BASE 3 LEGS - BASE 3 PATAS



fixed top / fijo ref. 65009
collapsible top / abatible ref. 65009T
fixed for glass / fijo para vidrio ref. 65009V

MARI-SOL BASE MESA Ø62 H50
MARI-SOL TABLE BASE Ø24½" H19¾"

TABLE TOPS OPTIONS - OPCIONES SOBRES



Finishes

finishes

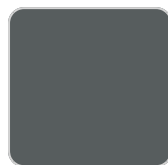
Fixed
Ref. 65009



white



british gray



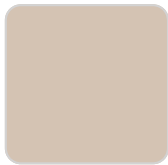
traffic gray



black



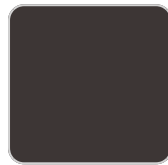
ecru



crema



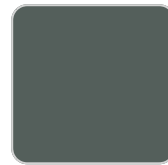
castoro fiber



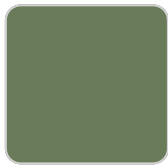
cacao



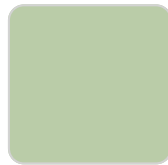
notte blue



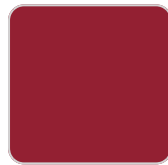
modo green



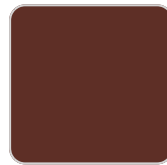
pickle



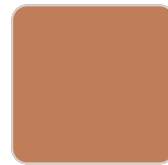
almond



red



purjai red



melon



mostaza

Powder coated aluminum base with non collapsable attachment made of polyamide and fiber glass

COLLAPSIBLE TOP
Ref. 65009T

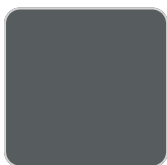
VONDOM



white



british gray



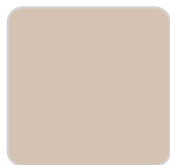
traffic gray



black



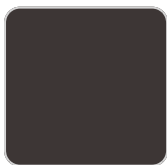
ecru



crema



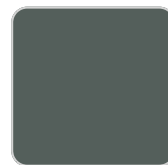
castoro fiber



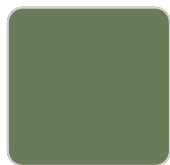
cacao



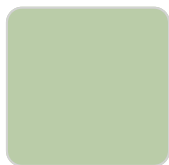
notte blue



modo green



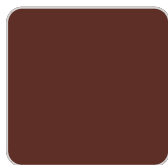
pickle



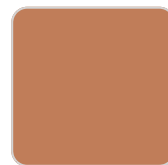
almond



red



purjai red



melon



mostaza

Powder coated aluminum base with 90° collapsable attachment made of polyamide and fiber glass

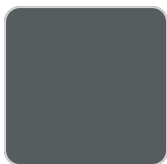
Fixed glass
Ref. 65009V



white



british gray



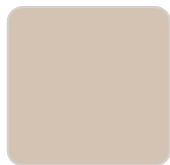
traffic gray



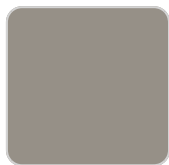
black



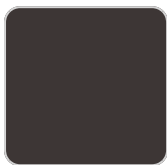
ecru



crema



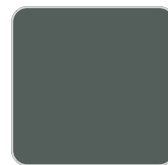
castoro fiber



cacao

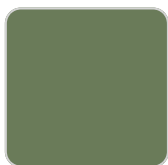


notte blue

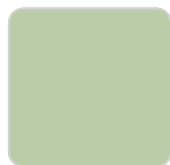


modo green

VONDOM



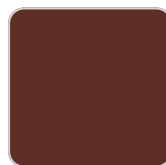
pickle



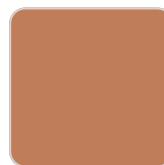
almond



red



purjai red



melon



mostaza

Powder coated aluminum base with non collapsable aluminum attachment powder coated, made exclusively for our glass tops.

Ambients

