

## Milos chaiselongue left section

by Jean-Marie Massaud

The Milos collection is the fruit of **Vondom's first collaboration with French designer Jean-Marie Massaud**. An example of how simplicity and functionality can be combined to create an elegant and comfortable outdoor furniture collection. Characterised by soft curves, this collection focuses on comfort.



## Info

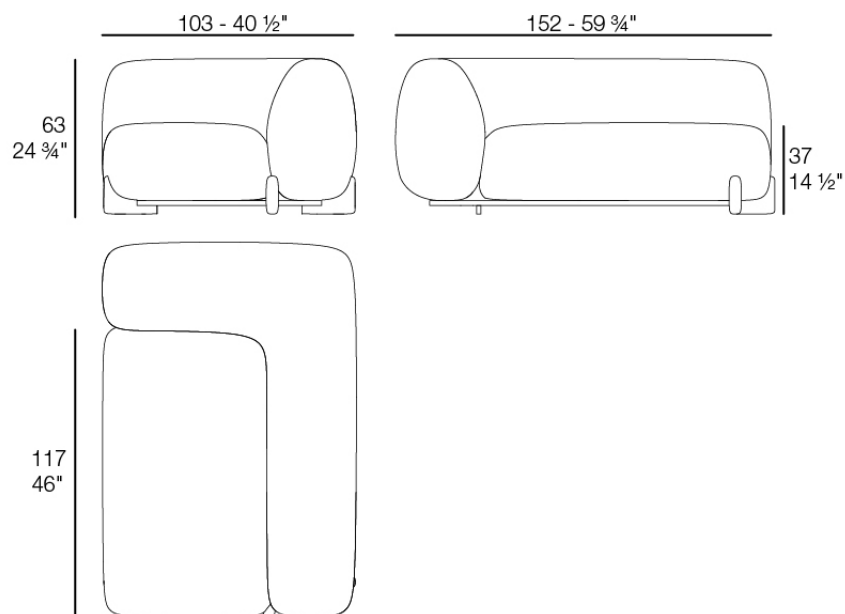
---

### Description

This modular sofa combines the durability of flexible polyurethane foam with the natural beauty of iroko wood.

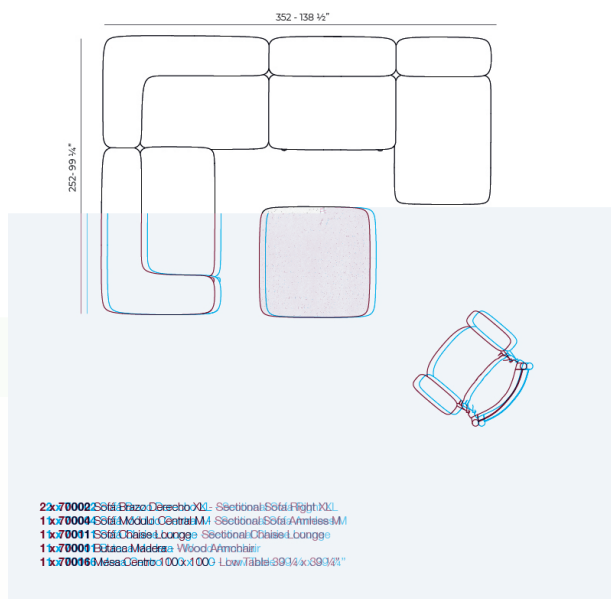
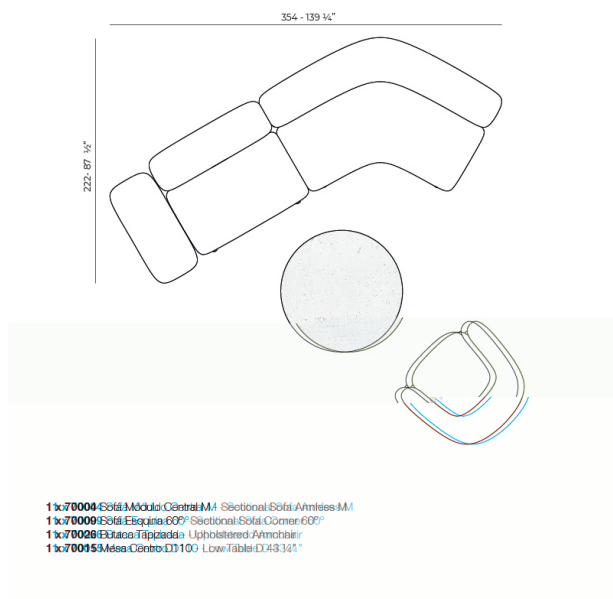
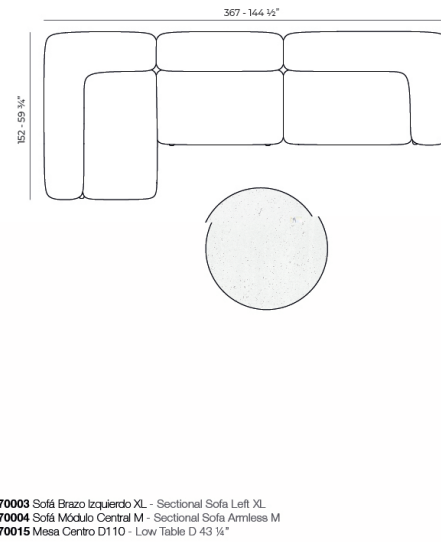
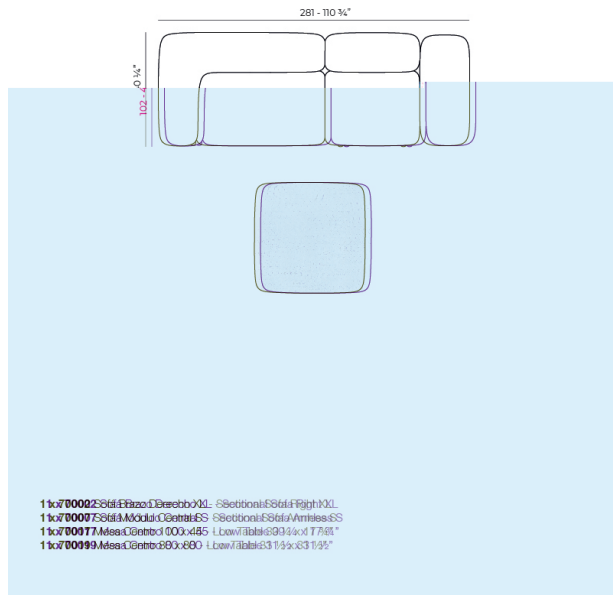
Its design integrates top-quality solutions and materials, especially conceived to withstand outdoor conditions without compromising warmth and comfort.

Weight: 29.65 Kg

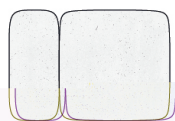
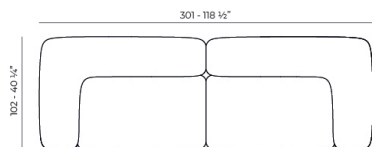


MILOS Sofá Chaiselounge Izquierda  
MILOS Sectional Sofa Chaiselounge Left  
Ref. 70028

## Combinations



# VONDOM



- 1 x 70002 Sofá Brazo Derecho XL - Sectional Sofa Right XL
- 1 x 70003 Sofá Brazo izquierdo XL - Sectional Sofa Left XL
- 2 x 70026 Sillaca Tapizada - Upholstered Armchair
- 1 x 70016 Mesa Centro 100 x 100 - Low Table 39 1/4 x 39 1/4"
- 1 x 70017 Mesa Centro 100 x 45 - Low Table 39 1/4 x 17 3/4"

## Finishes

---

### finishes

---

POLYURETHANE

Ref. 70028

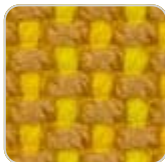
Furniture made of flexible polyurethane injected cold. This material possesses a high resilience and durability.

### fabric

---

GLAD

Ref. 70003CO



oro 1031



ocre 1051



sunset 1020



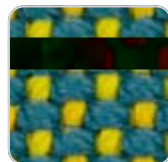
delhi 1038



lima 1030



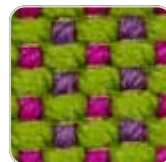
aguacate 1028



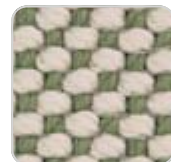
caribe 1004



bosc 1029



artemisa 1027



oasis 1007



oceano 1005



pruna 1045



noa 1026



berry 1021



amatista 1011

# VONDOM



vera 1019



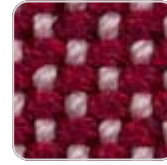
afrodita 1013



grana 1046



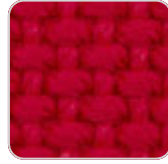
bacco 1034



dahlia 1035



wine 1012



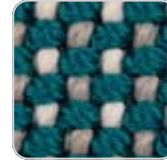
foc 1052



hestia 1014



turquoise 1053



niord 1015



masai 1018



ultramar 1002



aquamarina 1003



esmeralda 1016



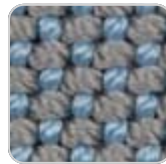
night 1024



galan 1025



eclipse 1023



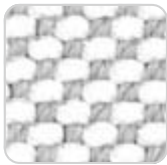
perla 1006



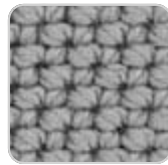
calipso 1017



snow 1041



iceberg 1037



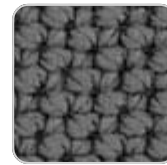
steel 1042



moon 1040



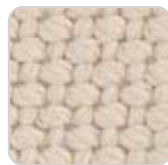
granito 1008



grey 1043



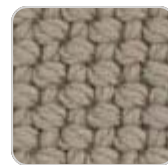
anthracite 1044



ecru 1047



dessert 1033



taupe 1048



terra 1039



duna 1009



moka 1010



chocolate 1050

Soft and cozy fabric suitable for indoor and outdoor use.

VARM

# VONDOM

Ref. 70003CO



blue jeans 1071



crema+blue 1063



tortora+crema 1070



crema+gray 1062



purjai red 1069



crema+ purjai red 1061



crema 1068



crema+modo green 1060



blue+crema 1067



black+crema 1066



purjai+crema 1065



green+crema 1064

Soft and cozy fabric suitable for indoor and outdoor use.

## HYGGE

Ref. 70003CO



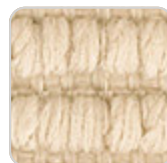
blue 1083



black 1082



gray 1081

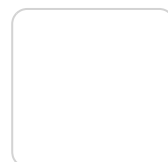
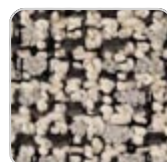
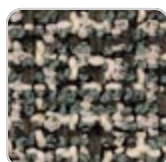
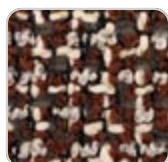
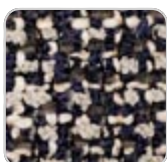


crema 1080

Soft and cozy fabric suitable for indoor and outdoor use.

## KROLLET

Ref. 70003CO



# VONDOM

krollet blue notte 1925

krollet purjai 1924

krollet verde 1923

krollet crema 1922

krollet white 1921



krollet black 1926

Soft and cozy fabric suitable for indoor and outdoor use.



## Ambients

---

