

Quartz dining table ø100

by Ramón Esteve

The Quartz chairs and table collection, designed by Ramón Esteve for Vondom, is characterized by its **orthogonal geometry and triangular shaped profiles**. Due to the line of one of its vertexes this piece appears extremely light.

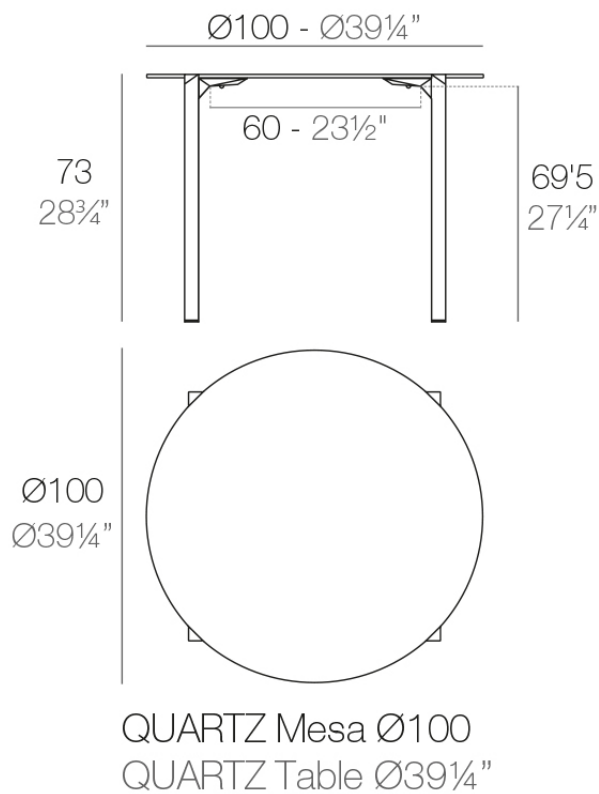


Info

Description

Made from polypropylene and reinforced with fiberglass manufactured by gas injection. Available in various colors. Suitable for indoor and outdoor use.

Weight: 13.06 Kg



Finishes

finishes

BASIC PP
Ref. 54202



white



black



ecru

Available in various colors

tabletops

Solid Core
Ref. VVAR02390

HPL
Ref. VVAR02390

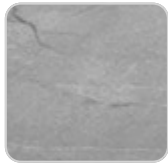
HPL black edge

Solid Core wood
Ref. VVAR02390

tabletops

Solid Core

Ref. VVAR02390



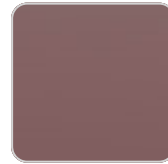
yule gray



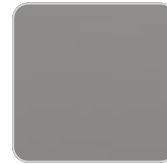
modo green



gioia bianco



purjai red



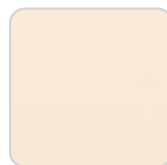
british gray



notte blue



traffic gray



crema



yule brown



castoro fiber



pulpis gray



piombo gray



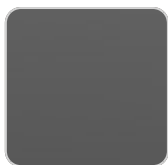
kandia black



cacao

HPL

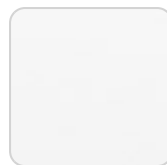
Ref. VVAR02390



black(black edge)



ecru(black edge)



white(black edge)

HPL black edge

Solid Core wood

Ref. VVAR02390

VONDOM



oak1



oak2

