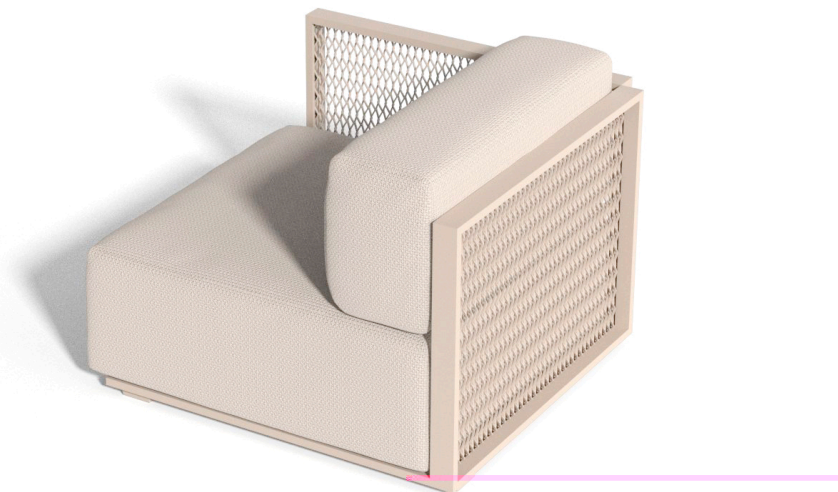


Products / Sofas / The Factory Sofa Modular

# The factory right armrest

by Ramón Esteve

The Factory Collection, designed by Ramon Esteve for Vondom, is **characterized by the aluminum profile and the “deployé” mesh**. Discover this collection of aluminium furniture composed of a modular sofa, an armchair, a lounge, a side table, a lamp, a coffee table, a high table, chairs, and a room divider.



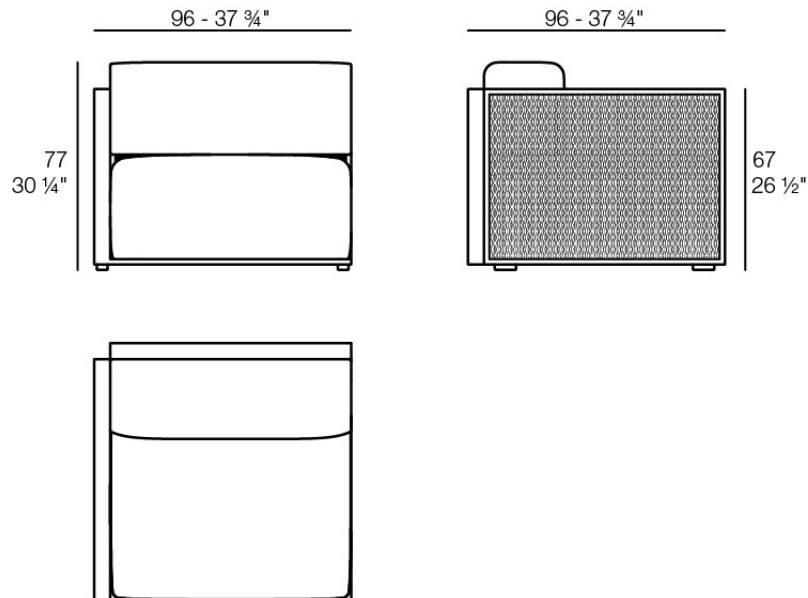
# Info

---

## Description

Made from aluminum and with a very comfortable padding. Our fabrics are available in a wide range of colours and very pleasant to touch. This collection is suitable for an indoor and an outdoor use.

Weight: 30.27 Kg



THE FACTORY Sofá Módulo Derecho  
THE FACTORY Sectional Sofa Right

# Finishes

---

## finishes

---

### LACQUERED

Ref. 54601



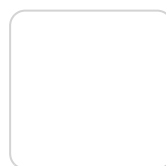
modo green



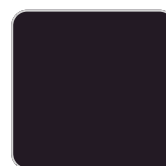
black



purjai red



white



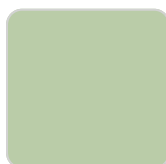
notte blue



pickle



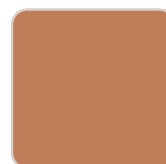
british gray



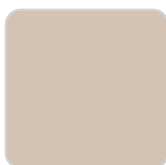
almond



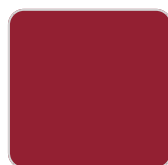
traffic gray



melon



crema



red



castoro fiber



ecru



bronze

Lacquered aluminium profile.

## fabric

---

### GLAD

Ref. 54600CO



oro 1031



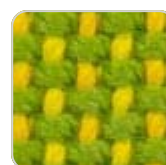
ocre 1051



sunset 1020



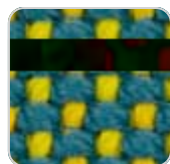
delhi 1038



lima 1030



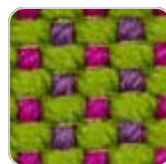
aguacate 1028



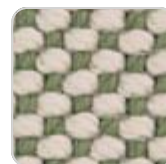
caribe 1004



bosc 1029



artemisa 1027



oasis 1007



oceano 1005



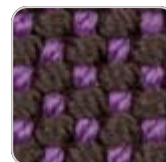
pruna 1045



noa 1026



berry 1021



amatista 1011



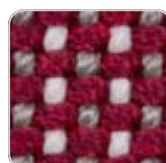
vera 1019



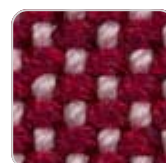
afrodita 1013



grana 1046



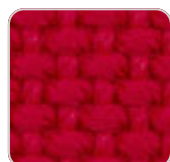
bacco 1034



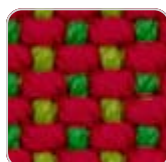
dahlia 1035



wine 1012



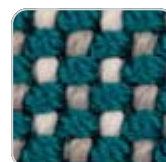
foc 1052



hestia 1014



turquoise 1053



niord 1015



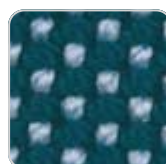
masai 1018



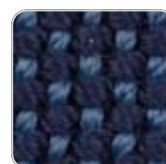
ultramar 1002



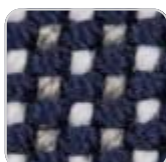
aquamarina 1003



esmeralda 1016



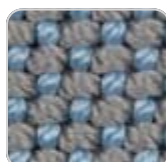
night 1024



galan 1025



eclipse 1023



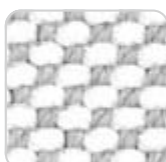
perla 1006



calipso 1017



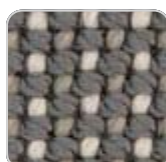
snow 1041



iceberg 1037



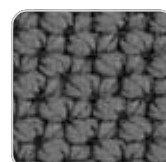
steel 1042



moon 1040



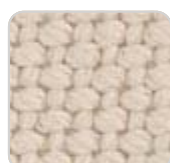
granito 1008



grey 1043



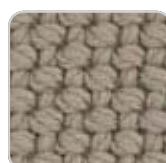
anthracite 1044



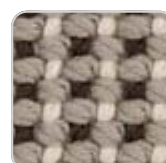
ecru 1047



dessert 1033



taupe 1048



terra 1039



duna 1009



moka 1010



chocolate 1050

Soft and cozy fabric suitable for indoor and outdoor use.

## VARM

Ref. 54600CO

Soft and cozy fabric suitable for indoor and outdoor use.

## HYGGE

Ref. 54600CO

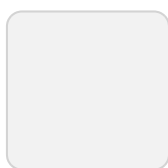
Soft and cozy fabric suitable for indoor and outdoor use.

## NAUTIC

Ref. 54600CO



bronze 1104



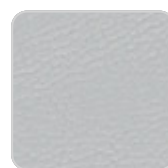
white 1100



crema 1103



red 1108



steel 1101



purjai red 1106



black 1105



notte blue 1114



natural 1111



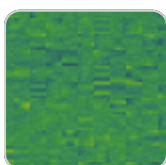
orange 3115



orange 1113



taupe 1102



forest 1112

Soft leather like fabric suitable for indoor and outdoor use. Standard option for upholstery.

## SILVERTEX Ref. 54600CO



forest 1224



beige 1211



bronze 1214



khaki 1218



steel 1208



plum 2016



navy 3068



taupe 1209



antrachite 1210

Vinyl fabric suitable for indoor and outdoor use. Special option for upholstery.

## CREVIN Ref. 54600CO



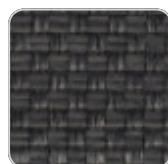
white 1308



steel 1309



taupe 1310



anthracite 1311

Upholstery fabric, that as and natural appearance and can be easy cleaned by washing machines, allowing an easy removal of mildew. Suitable for indoor and outdoor use

## CICO Ref. 54600CO

Cozy fabric with an elegant look and soft touch.  
ACAPULCO

Ref. 54600CO

Cozy fabric with an elegant look and soft touch.

SIESTA

Ref. 54600CO

Cozy fabric with an elegant look and soft touch.

IKON

Ref. 54600CO

Cozy fabric with an elegant look and soft touch.

KROLLET

Ref. 54600CO

Soft and cozy fabric suitable for indoor and outdoor use.

HERITAGE

Ref. 54600CO



granite 1531

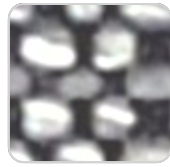
Outdoor fabrics are waterproof 50% recycled acrylic, 47% acrylic and 3% PE.

SAVANE

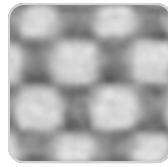
Ref. 54600CO



white 1501



tornado 1503



whisper 1502

Outdoor fabrics are waterproof 100% acrylic.



# Ambients

---

