

Vela round ottoman ø60x40cm

by Ramón Esteve

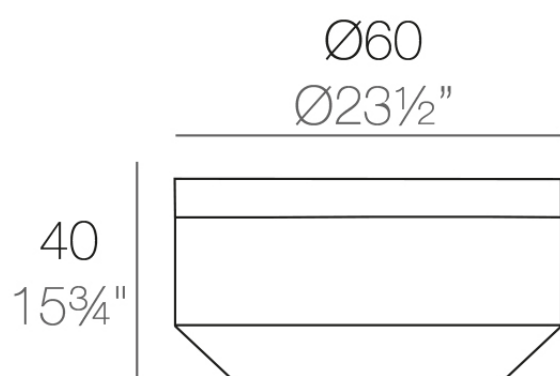
Vela Collection, designed by Ramon Esteve for Vondom. This extensive outdoor furniture and plantpot collection aims to offer the comfort and the quality of interior furniture without losing it's original qualities.



Info

Description

Weight: 6.06 Kg



VELA CHILL Puff $\text{Ø}60$

VELA CHILL Ottoman $\text{Ø}23\frac{1}{2}"$

Finishes

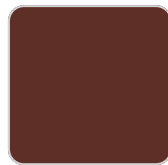
finishes

BASIC

Ref. 54192



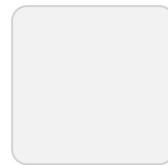
green



purjai red



orange



ice



notte blue



crema



white



black



bronze



steel



anthracite



red



khaki



taupe



ecru



beige

Matt Polyethylene

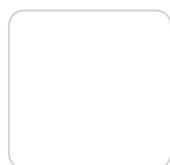
LACQUERED

Ref. 54192F

VONDOM



purjai red



white



black



bronze



steel



anthracite



red



khaki



taupe



ecru



beige



modo green



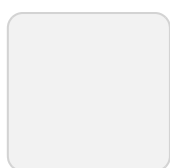
champany

Lacquered Polyethylene

lighting

RGBW LED BATTERY

Ref. 54192Y

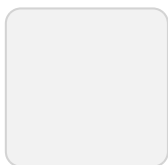


ice

Unit with internal lighting with battery-powered RGBW LED technology. Includes charger and remote control for switching colors and charger. Available only in matte ice white finish.

RGBW LED DMX BATTERY

Ref. 54192DY



ice

Unit with internal lighting with RGBW LED technology and remote control unit for switching colors. Also controlled by DMX-1024 (wireless), enabling communication between one or more products simultaneously via the DMX transmitter (not included). There are two options to choose from: Professional XLR DMX and Home WIFI DMX. (Remote control included).

fabric

GLAD

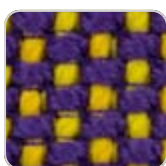
Ref. 54192CO



oro 1031



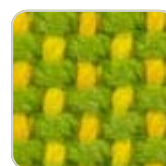
ocre 1051



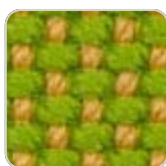
sunset 1020



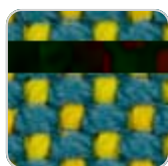
delhi 1038



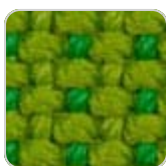
lima 1030



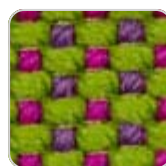
aguacate 1028



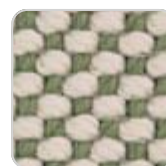
caribe 1004



bosc 1029



artemisa 1027



oasis 1007



oceano 1005



pruna 1045



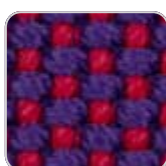
noa 1026



berry 1021



amatista 1011



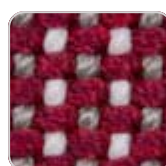
vera 1019



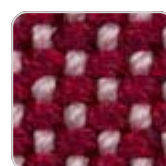
afrodita 1013



grana 1046



bacco 1034



dahlia 1035

VONDOM



wine 1012



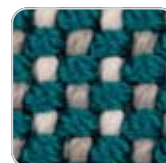
foc 1052



hestia 1014



turquoise 1053



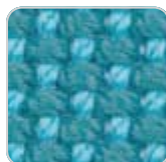
niord 1015



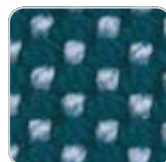
masai 1018



ultramar 1002



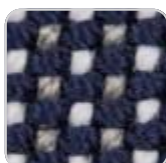
aquamarina 1003



esmeralda 1016



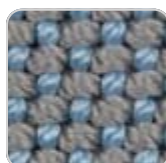
night 1024



galan 1025



eclipse 1023



perla 1006



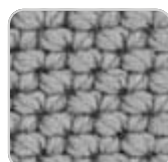
calipso 1017



snow 1041



iceberg 1037



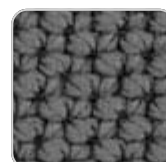
steel 1042



moon 1040



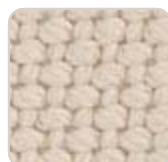
granito 1008



grey 1043



anthracite 1044



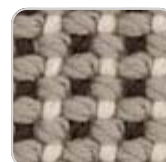
ecru 1047



dessert 1033



taupe 1048



terra 1039



duna 1009



moka 1010



chocolate 1050

Soft and cozy fabric suitable for indoor and outdoor use.

VARM

Ref. 54192CO

Soft and cozy fabric suitable for indoor and outdoor use.

HYGGE

VONDOM

Ref. 54192CO

Soft and cozy fabric suitable for indoor and outdoor use.

NAUTIC

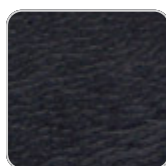
Ref. 54192CO



purjai red 1106



natural 1111



black 1105



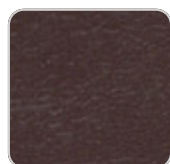
red 1108



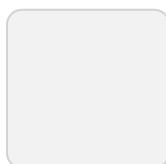
notte blue 1114



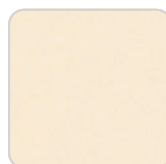
taupe 1102



bronze 1104



white 1100



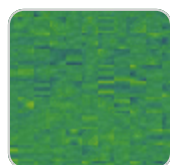
crema 1103



orange 1113



steel 1101



forest 1112

Soft leather like fabric suitable for indoor and outdoor use. Standard option for upholstery.

SILVERTEX

Ref. 54192CO



forest 1224



beige 1211



bronze 1214



khaki 1218



steel 1208

VONDOM



taupe 1209



antrachite 1210

Vinyl fabric suitable for indoor and outdoor use. Special option for upholstery.

CREVIN

Ref. 54192CO



white 1308



steel 1309



taupe 1310



anthracite 1311

Upholstery fabric, that as and natural appearance and can be easy cleaned by washing machines, allowing an easy removal of mildew. Suitable for indoor and outdoor use

CICO

Ref. 54192CO

Cozy fabric with an elegant look and soft touch.

ACAPULCO

Ref. 54192CO

Cozy fabric with an elegant look and soft touch.

SIESTA

Ref. 54192CO

VONDOM

Cozy fabric with an elegant look and soft touch.

IKON

Ref. 54192CO

Cozy fabric with an elegant look and soft touch.

KROLLET

Ref. 54192CO

Soft and cozy fabric suitable for indoor and outdoor use.

HERITAGE

Ref. 54192CO



granite 1531

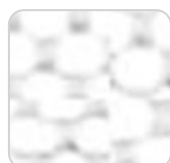
Outdoor fabrics are waterproof 50% recycled acrylic, 47% acrylic and 3% PE.

SAVANE

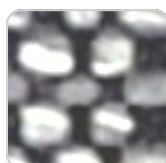
Ref. 54192CO



whisper 1502



white 1501



tornado 1503

Outdoor fabrics are waterproof 100% acrylic.

