

Vela shelving system 100x50x10

by Ramón Esteve

Vela Collection, designed by Ramon Esteve for Vondom. This extensive outdoor furniture and plantpot collection aims to offer the comfort and the quality of interior furniture without losing it's original qualities.

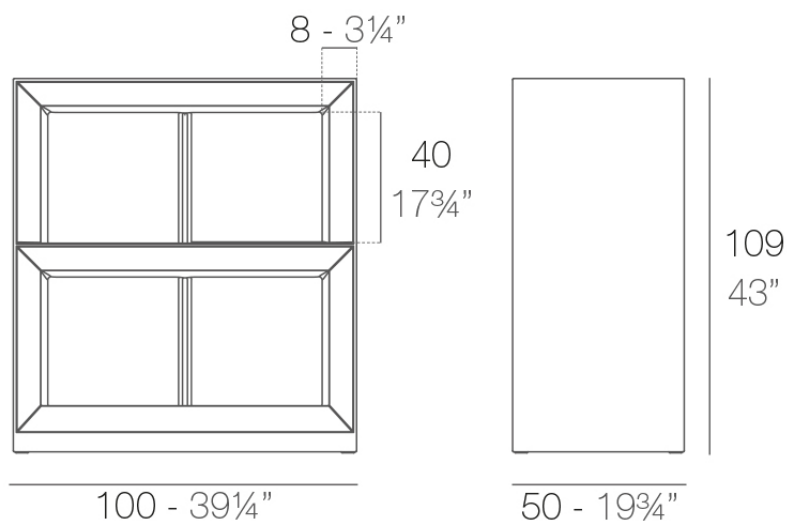


Info

Description

Made of polyethylene resin by rotational moulding. 100% Recyclable. Item suitable for indoor and outdoor use. Available in different finishes.

Weight: 35.06 Kg



VELA Contrabarra
VELA Shelving system

Finishes

finishes

BASIC

Ref. 54123



green



purjai red



orange



notte blue



crema



white



black



bronze



steel



anthracite



red



khaki



taupe



ecru

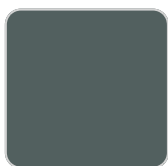


beige

Matt Polyethylene

LACQUERED

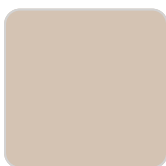
Ref. 54123F



green



purjai red



crema



white



black



bronze



steel



anthracite



red



khaki



taupe



ecru



beige



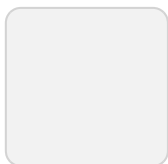
champany

Lacquered Polyethylene

lighting

WHITE LED

Ref. 54123W

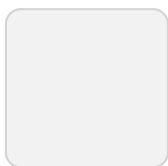


ice

White internally lit unit with LED technology. Available only in matte ice white finish.

RGBW LED

Ref. 54123L



ice

Unit with internal lighting with RGBW LED technology and remote control unit for switching colors. Available only in matte ice white finish. Remote control included.

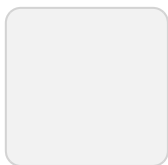
RGBW LED DMX Ref. 54123D



ice

Unit with internal lighting with RGBW LED technology and remote control unit for switching colors. Also controlled by DMX-1024 (wireless), enabling communication between one or more products simultaneously via the DMX transmitter (not included). There are two options to choose from: Professional XLR DMX and Home WIFI DMX. (Remote control included). Optional battery

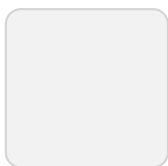
RGBW LED BATTERY Ref. 54123Y



ice

Unit with internal lighting with battery-powered RGBW LED technology. Includes charger and remote control for switching colors and charger. Available only in matte ice white finish.

RGBW LED DMX BATTERY Ref. 54123DY



ice

Unit with internal lighting with RGBW LED technology and remote control unit for switching colors. Also controlled by DMX-1024 (wireless), enabling

communication between one or more products simultaneously via the DMX transmitter (not included). There are two options to choose from: Professional XLR DMX and Home WIFI DMX. (Remote control included).

Ambients

