

Vela shelving system 100x50x20

by Ramón Esteve

Vela Collection, designed by Ramon Esteve for Vondom. This extensive outdoor furniture and plantpot collection aims to offer the comfort and the quality of interior furniture without losing it's original qualities.

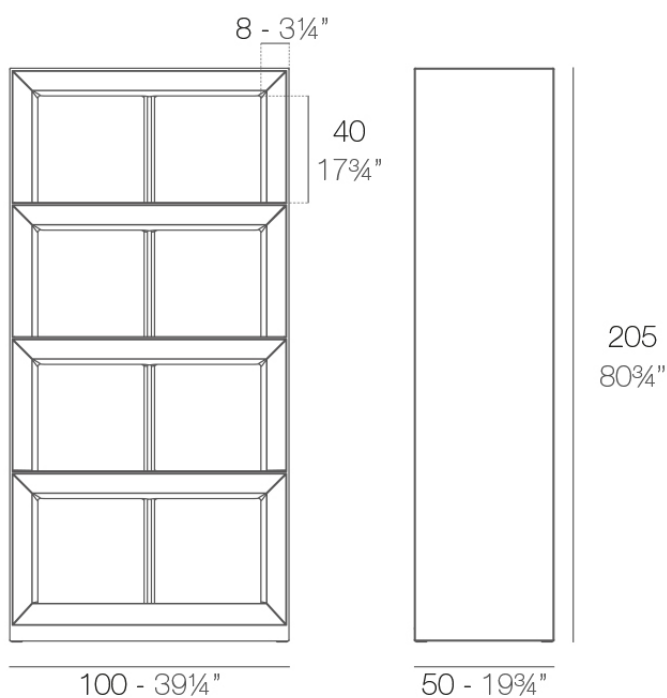


Info

Description

Made of polyethylene resin by rotational moulding. 100% Recyclable. Item suitable for indoor and outdoor use. Available in different finishes.

Weight: 40.05 Kg



VELA Contrabarra
VELA Shelving system

Finishes

finishes

BASIC

Ref. 54124



crema



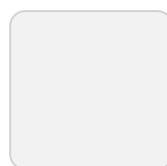
green



purjai red



orange



ice



notte blue



white



black



bronze



steel



anthracite



red



khaki



taupe



ecru

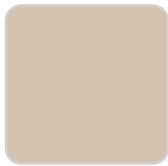


beige

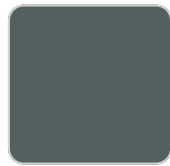
Matt Polyethylene

LACQUERED

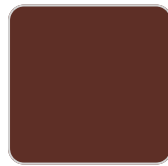
Ref. 54124F



crema



green



purjai red



white



black



bronze



steel



anthracite



red



khaki



taupe



ecru



beige

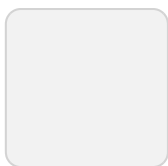


champany

Lacquered Polyethylene

lighting

WHITE LED
Ref. 54124W



ice

White internally lit unit with LED technology. Available only in matte ice white finish.

RGBW LED
Ref. 54124L

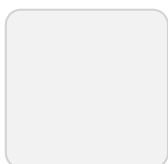


ice

Unit with internal lighting with RGBW LED technology and remote control unit for switching colors. Available only in matte ice white finish. Remote control included.

RGBW LED DMX

Ref. 54124D

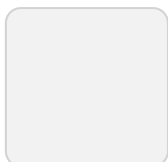


ice

Unit with internal lighting with RGBW LED technology and remote control unit for switching colors. Also controlled by DMX-1024 (wireless), enabling communication between one or more products simultaneously via the DMX transmitter (not included). There are two options to choose from: Professional XLR DMX and Home WIFI DMX. (Remote control included). Optional battery

RGBW LED BATTERY

Ref. 54124Y



ice

Unit with internal lighting with battery-powered RGBW LED technology. Includes charger and remote control for switching colors and charger. Available only in matte ice white finish.

RGBW LED DMX BATTERY

Ref. 54124DY



ice

Unit with internal lighting with RGBW LED technology and remote control unit for switching colors. Also controlled by DMX-1024 (wireless), enabling communication between one or more products simultaneously via the DMX transmitter (not included). There are two options to choose from: Professional XLR DMX and Home WIFI DMX. (Remote control included).

Ambients

