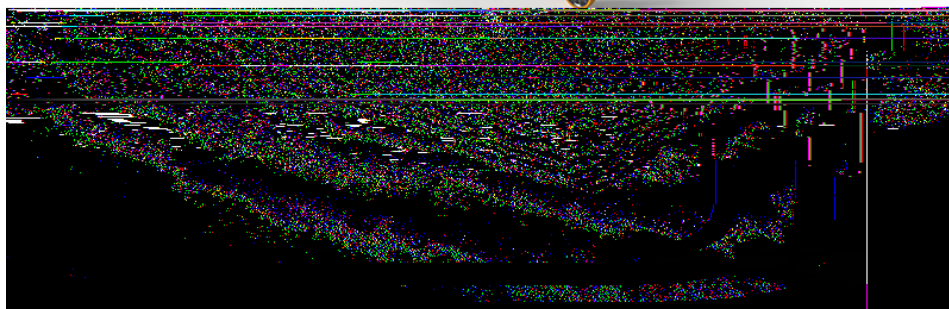


Vineyard dining table wheel

by Ramón Esteve

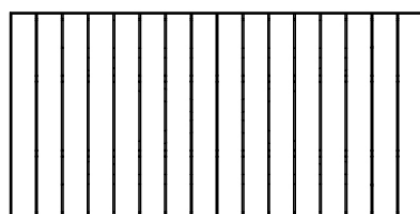
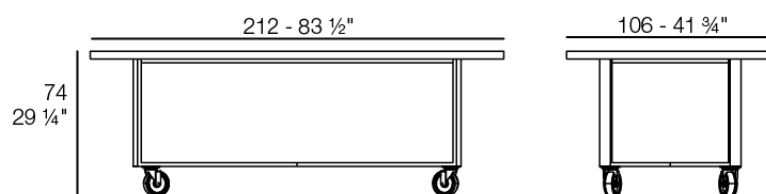
Vineyard Collection, by Ramon Esteve, is an aluminium and wooden outdoor furniture collection with a rustic and warm style.



Info

Description

Weight: 32 Kg

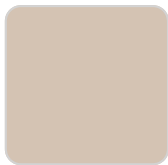


VINEYARD Mesa Comedor
VINEYARD Dining Table

Finishes

finishes

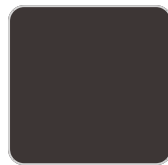
Aluminium
Ref. 54505ZSU



crema



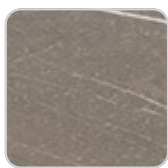
castoro fiber



cacao

panel/top

Solid Core
Ref. 54505AA



pulpis gray



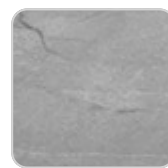
piombo gray



kandia black



cacao



yule gray



modo green



gioia bianco



purjai red



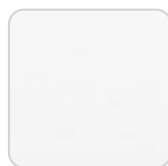
british gray



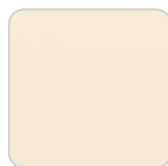
notte blue



traffic gray



white (white edge)



crema



yule brown



castoro fiber

VONDOM

Solid Core wood
Ref. 54505AA



oak1



oak2

Teak
Ref. 54505AA



natural teak



weathered teak

